



---

## FltPlan Go App for iPad

---

FltPlan Go brings route and mapping features from the FltPlan website to the iPad for offline and inflight use.

### Features

- Download and save flight plans, navlogs, and weather briefings for offline and inflight use.
- High resolution / zoomable sectional, victor low, and jet high charts in online and offline modes.
- Navigate satellite, street, shaded relief, and topographical maps with a wi-fi connection.
- Toggle downloadable airport information over any base-map/chart.
- Check pre-flight radar weather.
- Track flights with the Flight Tracking feature.
- Download maps and approach charts at high speeds.
- View weather overlays with Clarity ADS-B™ (unit required) and XM Weather™ (subscription required).
- Calculate the weight and C.G. of an aircraft with the Weight & Balance feature.
- Free Tools and Calculators including eLogbook, Checklist, and Weight & Balance.
- X-Plane integration.

### Support & Reporting a Bug

To contact support or report a bug send an email to [Support@FltPlan.com](mailto:Support@FltPlan.com) by tapping the **Settings** icon on the Dashboard. Look for the **email Support** button on the upper right of the box that appears. Please provide the following information:

- FltPlan username and N number (if appropriate).
- Your full name.
- The device that you are using (e.g., iPad 1, 2 or 3).
- iOS version (e.g., iOS 6.1).
- The app version.
- Where the error occurs in the application.
- A description of the error.



# Airports

Tap the **Airports** button on the dashboard.

FBO Information for a selected airport will be displayed. To change airports, tap the top center button. A drop-down box will appear, allowing you to select a different airport.



From the Airports menu you can select the following options:

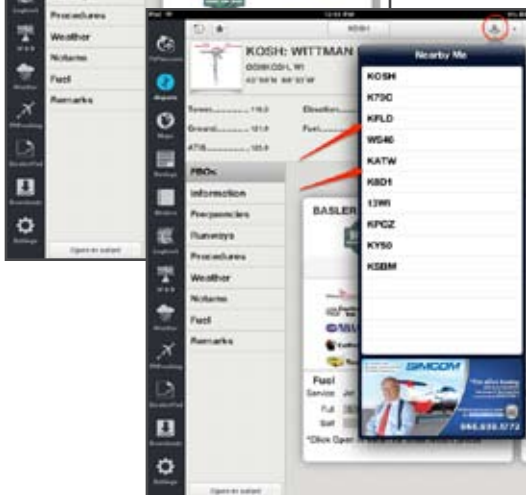
- FBOs
- Information
- Frequencies
- Runways
- Procedures
- Weather
- Notams
- Fuel
- Remarks



The **+** button at the top right corner of the screen opens a drop-down box which allows you to add the airport you are viewing to your binder.



The **Nearby Me** button at the top right displays airports near your location.





# Airports



The **Airport Diagram**, **Nearby Airports**, and **A/FD** buttons are located below the **Nearby Me** and **+** buttons.

- **Airport Diagram** opens the Approach Plate for the selected airport.
- **Nearby Airports** displays airports close to your selected airport
- **A / FD** opens the A / FD for the selected airport.



Tap the **Procedures** button to show the Airport, Approaches, Arrivals, and Departures for your selected Airport. The purple triangle means that Geo-referencing is on and working properly.



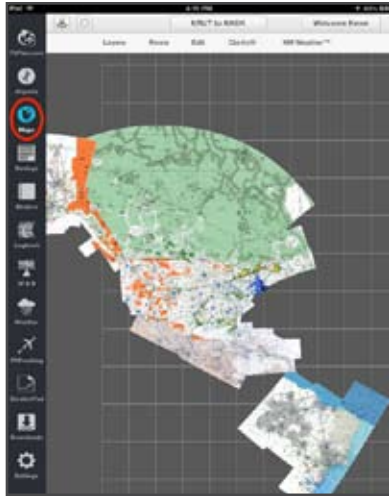
When you select **Approaches** the small red airplane icon displays your current location.



The **History** button displays airports you have viewed in the past.

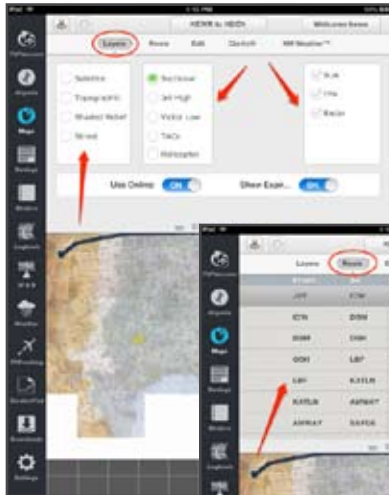


# Maps

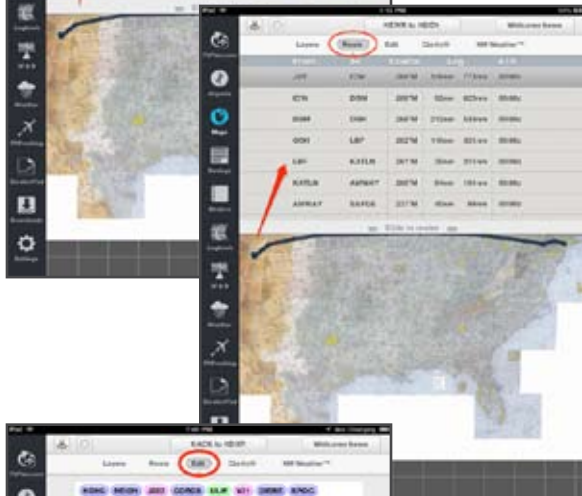


Tap the **Maps** icon on the Dashboard to begin.

The menu at the top of the Maps screen shows the primary map option tabs: **Layers**, **Routes**, **Edit**, **Clarity**, and **XM Weather**.



The **Layers** tab lets you select map layers, types of maps, and overlays.



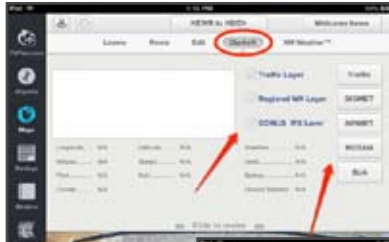
The **Routes** tab shows the routes in your account.



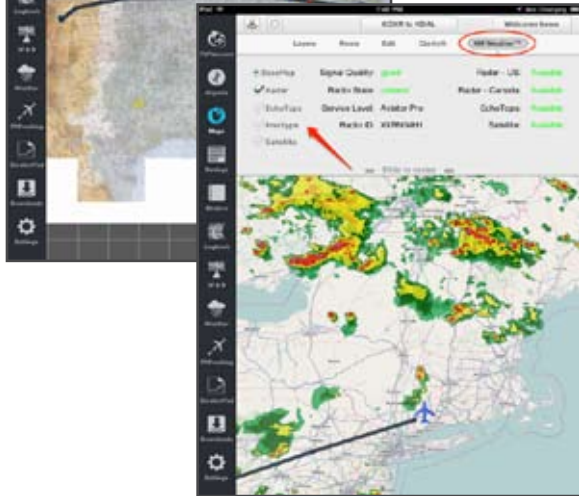
The **Edit** tab lets you change your current route by typing an airport into the text field and allows you to file a flight plan.



# Maps



Access **Clarity ADS-B** or **XM Weather** options from the corresponding tabs.



To change your route, tap the button at the top center of the maps home screen. A drop-down box displaying your routes will appear.



# NavLogs



Tap the **NavLogs** icon on the Dashboard then tap the button at the top center of the screen.



A drop-down box displays NavLogs available for download or updates.



# Binders



Tap the **Binders** icon on the Dashboard.

To create a new binder tap the button at the top center of the screen. Then tap the **+** button in the drop-down box that appears.

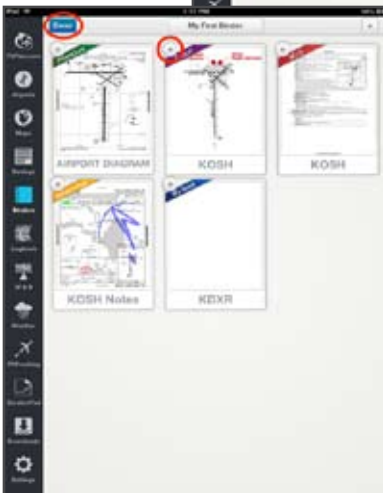


To add files to a binder tap the **+** button at the top right of the screen. Select the file you wish to add from one of the options listed.



To delete files from your binder tap the **Edit** button in the top left corner of the screen.

The files in your binder will start an animation and an **X** button will appear in the corner. Tap the **X** button to delete a file from your binder.





# Weather



Tap the **Weather** button on the Dashboard.

Tap the button at the top center of the screen then tap the **+** button in the drop-down box that appears.



Choose between **Location** or **Route Weather**.



Enter airport IDs in the text boxes.



# Flight Tracking



Tap the **Flight Tracking** button on the Dashboard.



Tap the **+** button in the drop down box that appears on the screen. Enter the A / C tail number in the text box that pops up.



The flight tracking screen will appear.



Tap the **W&B** button on the Dashboard. When the screen loads, tap the **Pick an Aircraft** button at the top center of the screen.



A drop-down box will appear with a list of your aircraft. Select an aircraft to begin.



Enter the weights of the seats, baggage, and fuel then tap **Press Here When Done**.



Scroll up to the graph to view the points plotted on the graph and in the table on the right. You can see all of the weight information, including Take Off and Landing Weight and C.G.



# ScratchPad



Tap the **ScratchPad** icon on the Dashboard, then tap the button on the top center of the screen.



A drop-down box will appear on screen. Tap the **+** button to add a Draw or Text page.



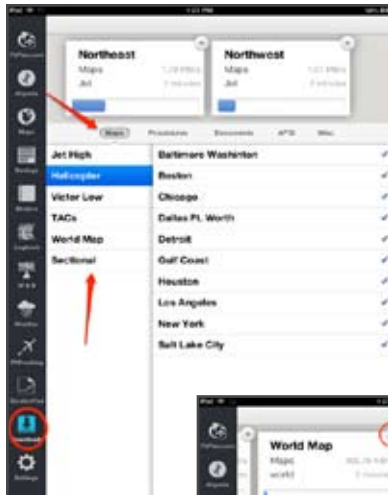
Enter the desired file name in the drop-down box and press the **Add** button to create the file.



You can add Approach Plates to the background of your Draw file by tapping the **Approach** button at the top right corner of the screen.

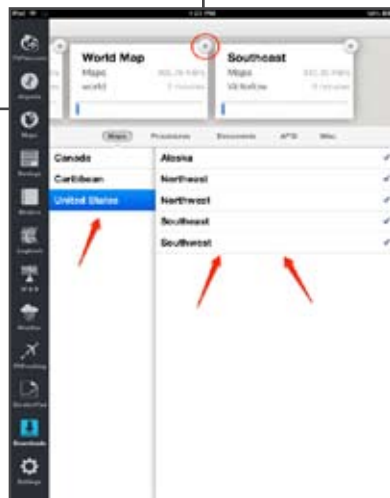


## Downloads



Tap the **Downloads** button on the Dashboard.

In the Maps section select one of the options. Additional options will appear on the right.



Tap the **X** button on the **Active Downloads** box to close or stop the download. **Procedures, Documents, AF/D, and Misc** work the same way.

