



FtPlan Go Android




## Table of Contents

Pre-Flight Your Device .....	6
Signing In.....	6
FtPlan.com Icon .....	7
Airports Icon.....	8
History .....	8
Favorites .....	8
Show on Map.....	8
Search/Browse Airports .....	9
Wind Calculator .....	9
Nearby Me Button .....	10
Binders Button .....	10
Navigating the Airport Icon.....	10
Airport Diagram Picture .....	10
Airport Diagram Button .....	10
Nearby Airports.....	11
Open A/FD .....	11
Navigating the Airports Tabs.....	11
FBOs Tab .....	11
Information Tab.....	11
Frequencies Tab .....	11
Runways Tab.....	11
Procedures Tab.....	12
Weather Tab .....	12
MOS Tab .....	12
<b>MOS</b> forecasts include important and practical details necessary for pre-flight planning such as temperature, ceiling height, visibility, wind speed and direction, the probability of precipitation, and the precipitation type. ....	12
<b>MOS</b> forecasts provide weather data for up to four days out, presented in 3-hour windows, and refreshed hourly. ....	12
Tap on <b>Reload Data</b> to refresh the MOS data to ensure it is the most current.....	12
NOTAMs Tab .....	13
Remarks Tab .....	13
Maps Icon .....	14
Layers, Route, Edit, METARs, MOS, Winds, WX, XM and ADS-B. ....	14



My Routes Button .....	14
Procedure Overlay on Maps .....	15
Nearby Me Button .....	17
Options Button.....	17
Orientation .....	17
Map & Ship Options .....	17
Route & Icon Options .....	18
Breadcrumbs .....	18
Go To Airport.....	18
Split Screen Button .....	19
Zoom Options Button .....	19
Measuring Tool .....	20
Timer Tool.....	20
Auto-Center Button .....	20
HUD.....	20
Layers Button .....	21
Route Button .....	21
Edit Button .....	21
Done & Clear Buttons.....	21
Reverse Route Button .....	21
P/P Button.....	22
Save Button.....	22
Tap Save to save the flight plan locally to the tablet. Saved flight plans will be listed under My Routes – Local Routes. ....	22
Save/File Button .....	22
Create a flight plan from within FtPlan Go.....	22
Waypoints Button .....	22
Procedures Button .....	23
S/R Grid Button .....	23
METARs Button.....	24
MOS Button .....	24
Winds Button.....	25
WX Button.....	25
Animated WX.....	25
XM Button .....	25
ADS-B Button .....	26
NavLogs Icon.....	27



NavLog Options Button.....	27
Split Screen Button .....	27
NavLogs/WX Button .....	28
Email NavLog.....	28
Zoom In/Zoom Out Arrows  .....	28
<b>External Icon .....</b>	<b>29</b>
Flight Plan Transfer .....	30
App to App .....	30
Connect to External GPS.....	30
<b>Checklists Icon.....</b>	<b>31</b>
Reset All Button .....	31
Previous Button .....	31
Next Button .....	31
Done Button .....	31
Skip Button.....	31
Reset List Button.....	31
<b>Binders.....</b>	<b>32</b>
Binder Icon.....	32
Open Button .....	32
Delete Button .....	32
Rename Binder Button .....	32
<b>Weather .....</b>	<b>33</b>
Tap on the Weather icon to view Wx for the Route or Location.....	33
Tap to Get WX Button .....	33
Refresh .....	33
<b>Tracking .....</b>	<b>34</b>
My Aircraft Button.....	34
Switching Aircraft.....	34
<b>Tools.....</b>	<b>35</b>
PDC Service .....	35
Cloud Tops .....	35
Weight & Balance .....	36
eLogbook .....	37
Temperature Conversion .....	37
ISA Temp Calculator .....	37



Density Altitude Calculator .....	38
Altitude/Elevation/Airport ID .....	38
Pressure Altitude (press to edit) .....	38
Outside Air Temperature .....	38
Runway Wind Calculator .....	39
Runway Wind Calculator w/Airport .....	39
Fuel Conversion .....	40
Custom Fuel .....	40
Equal Time Point Calculator .....	40
My Doodles and Select Size. ....	41
My Doodles Button .....	41
<b>Downloads .....</b>	<b>42</b>
To Download .....	43
To Delete .....	43
Queue .....	43
Failed Downloads.....	44
Update All .....	44
Storage Location.....	44
<b>Settings.....</b>	<b>44</b>
Device.....	45
GPS Settings.....	45
Notifications .....	45
About.....	45



## Pre-Flight Your Device

Verify that the tablet is up to date with the latest FtPlan Go software and is up to date with the latest Android OS.

To aid in device security, use a properly supported device that is dedicated to the aircraft and not shared with personal use.

Make the most of your FtPlan Go in-flight experience, and download the following before take-off:

- NavLogs
- Charts & Maps
- Airport & FBO Information
- Trip-related documents

Create your Checklists and update your Weight & Balance profile on the website for in-flight use.

## Signing In

**FtPlan Go** will default to the **Airports** section when opened.

To sign into your FtPlan account, tap the **Sign In** button in the upper right corner of the FtPlan.com icon, Maps icon, or NavLogs icon. Enter your username and password and tap **Sign In**.

Note: On smaller devices, like phones, the **Sign In** button is located on the top left.

If you do not already have a FtPlan.com account, tap the blue link labeled, **Create Your Account**.

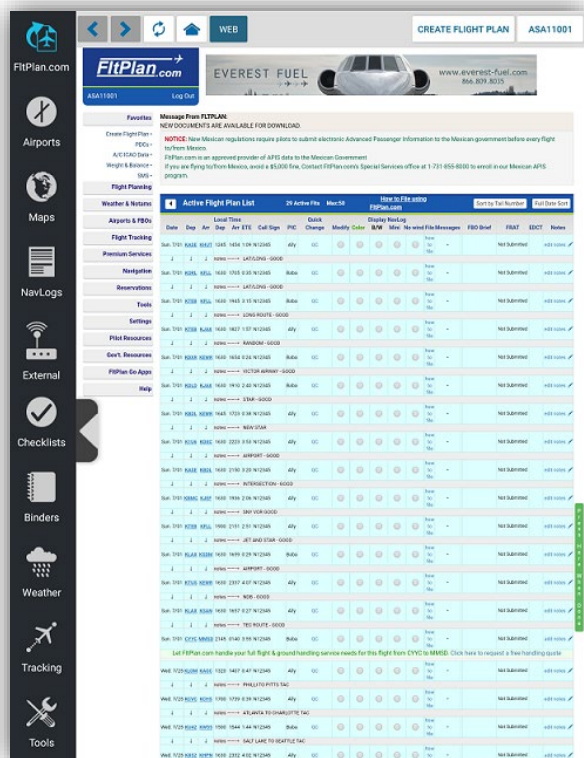
If you forgot your username or password, tap the green link labeled, **Forgot Username/Password**.

To **Sign Out**, tap on your username in the top right corner. A pop-up window will appear, tap and hold on the username you wish to sign out of. An additional pop-up window will appear and you will be asked if you want to sign out. Tap **Log out** to sign out of your account.

To switch accounts, tap on your username in the top right corner and **Add Account**. Go to **Stored Accounts** to switch to another account.



## FitPlan.com Icon

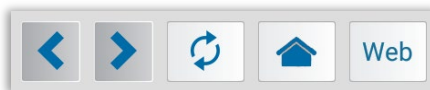


Select the FitPlan.com icon to access your account information; create and file your flight plan on the go; and edit Checklists and Weight & Balance profiles. You can also access Premium Services including eAPIS, Flight Tracking, SMS, and Runway Analysis.

Select Create a flight plan to go to the New Flight Plan page. Enter pertinent flight information and place a check-mark next to the flight plan in File This and select Press Here When Done to file.

Select Web to open FitPlan.com in a Safari web browser.

Select the Home icon to be brought back to the Main Menu page of FitPlan.com.



Tap the **Forward** or **Back** buttons to navigate between pages.

Tap the **Refresh** button to refresh the current page you are on.

Tap the **Home** button to return to the **Main Menu** page of the **FitPlan.com** icon.

Tap the **Web** button to open the page you are on in your device's default browser window.

Tap the **Create a Flight Plan** button and you will be brought to the **New Flight Plan** window where you can create and file the flight plan.



## Airports Icon

Tap the **Airports** icon to view Airport & FBO Information including current fuel prices, Geo-Referenced approach plates & airport diagrams (U.S & Canada), Weather, including METARs, TAFs, PIREPs, & MOS, NOTAMs & Remarks.



The header of the **Airports** section contains **History**, **Favorites**, **Show On Map**, **Search Airports**, **Wind Calc.** and **Nearby Me**.

History	
KJFK, JOHN F KENNEDY INTL	NEW YORK, NY
KFLY, SHERMAN AAF	FORT LEAVENWORTH, KS
CT41, GENERAL ELECTRIC HELIPORT PVT	FAIRFIELD, CT
CYTE, CAPE DORSET	CAPE DORSET, NU
KOXC, WATERBURY-OXFORD	OXFORD, CT
CYCK, CHATHAM KENT	CHATHAM, ON
CYYZ, LESTER B. PEARSON INTL	TORONTO, ON
KHGR, HAGERSTOWN RGNL- HENSON	HAGERSTOWN, MD
76PA, ALIQUIPPA HOSPITAL HELIPORT	ALIQUIPPA, PA
KOLD, DEWITT FLDOLD TOWN MUNI	OLD TOWN, ME

### History



Tap the **History** button to view a list of your most recently viewed airports.

By selecting any of the airports listed, you will be brought to the corresponding airports' page containing information on FBOs, Frequencies, Runways, Procedures, etc.

### Favorites



Tap the **Favorites** button to view a list of your favorite airports.


To add an airport to your **Favorites** list, tap the **Add to Favorites** button. Whichever airport you are currently viewing on the **Airports** section will then be added to the list of favored airports.

### Show on Map



Tap **Show on Map** to display the particular airport on the **Maps** section.

A pop-up window with the airport ID label will appear over the location on the map displaying various airport information including: lat/long, city, fuel, elevation, variation, clearance, arrival ATIS, departure ATIS, Ground, Tower, ASOS/AWOS, and several buttons including **View Runways**, **View Airport** (within the **Airports** section), and **View Procedures**.

KEWR	
Latitude	40.69
Longitude	-74.17
	
City	NEWARK
Fuel	JET/AVGAS
Elevation:	17.0
Variation:	13.0
Clearance:	118.85
Arrival ATIS:	115.7/S134.82
Departure ATIS:	134.82
Ground:	121.8/126.15
Tower:	118.3/134.05
<a href="#">View Runways</a>	
<a href="#">View Airport</a> <a href="#">View Procedures</a>	
<a href="#">Close</a>	





## Search/Browse Airports

Tap **Search Airports** to search airports by identifier or name, or by state or country.

Tap in the search airports bar to manually type in the airport you are searching for.

Beneath the search airports bar you will see a list you can scroll through of all the available states, provinces, and countries. Tap on the state you are searching in and all of the available airports in the FltPlan.com database for that state will appear.

## Wind Calculator

WIND CALC.

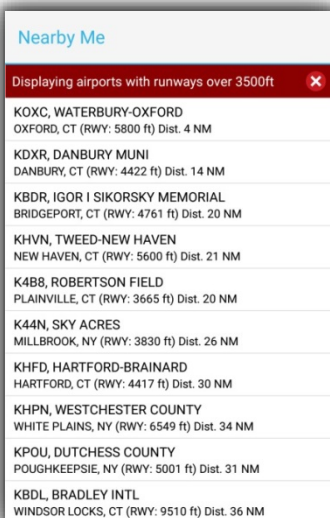
Tap **Wind Calculator** and the Wind Calculator will be displayed with the runway numbers of the airport you have chosen.

On the **Wind Calculator** choose the runway number, the degree at which the wind is coming from, the wind speed, and the gusting to wind speed in knots, and the Ref speed.

In the top left corner of the **Wind Calculator** there is a **Change Airport** button. Tap this button and a pop-up window will appear labeled, **Airport ID**.

Type in the airport ID you wish to view within the **Wind Calculator** and tap the **Search** button and the searched airport will then be displayed with corresponding runway numbers.

In the top right corner of the **Wind Calculator** there is a **Preferences** button. Tap the **Preferences** button and you will be able to enter additional information including: **Tailwind Caution, Tailwind Limit, Crosswind Caution, Crosswind Limit, Target Speed** and a **Min** and **Max**, whether it is a **Steady State Wind**, and **Head Wind Comp**.



## Nearby Me Button



Tap **Nearby Me** to view a list of the ten closest airports to your current location.

Tap on any of the listed airports and you will be brought to the corresponding airports' page containing information on FBOs, Frequencies, Runways, etc.

## Binders Button



Tap the Binders button and a pop-up window labeled Binders will appear with the list of Binders you have created on your device. Tap the Binder you wish to store this airport information in and a message will appear titled; **KXXX added**.

## Navigating the Airport Icon

After you have selected your desired airport, Airport & FBO Information including current fuel prices, Geo-Referenced approach plates & airport diagrams (U.S & Canada), Weather, including METARs, TAFs, PIREPs, & MOS, NOTAMs & Remarks will be displayed.

## Airport Diagram Picture

In the upper left corner of the **Airports** section there is an edited airport diagram that displays FBO locations in relation to the runways. Tap the picture to enlarge.

## Airport Diagram Button

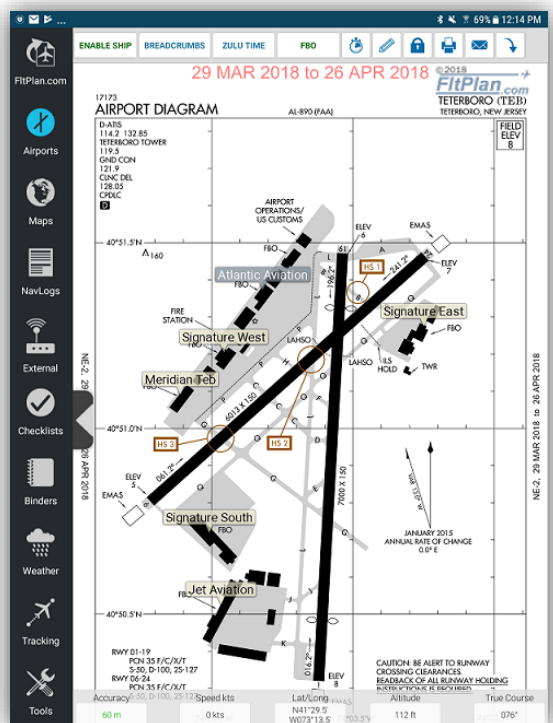
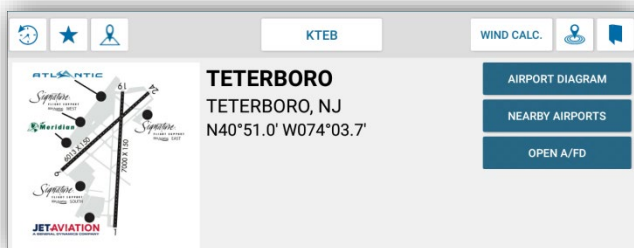
Tap the **Airport Diagram** button and you will be redirected to airport diagram as displayed in the latest **A/FD**.

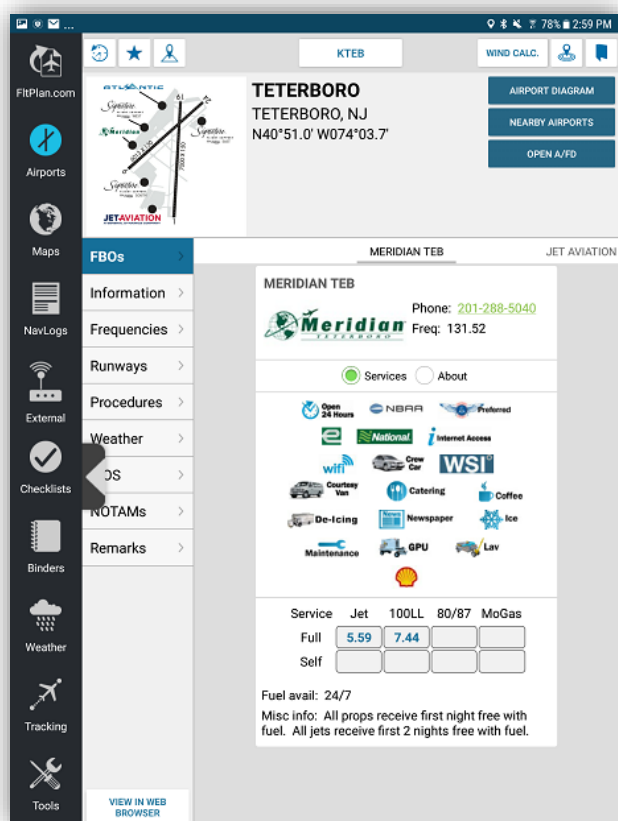


The header of the Airport Diagram contains several buttons including **Enable Ship**, **Breadcrumbs**, **Zulu Time**, **FBO**, **Timer**, **Pencil Tool**, **Lock Screen**, **Print**, **Email**, and **Rotate**.

**Zulu Time** creates a Time Stamp when you tap and hold on the Airport Diagram.

**FBO** displays the FBO locations on the Airport Diagram.





## Nearby Airports

Tap the **Nearby Airports** button and a pop-up window will appear displaying the closest airports in relation to the selected airport. Switch to **Nearby Alternates** to display the closest alternate airports.

## Open A/FD

Tap the **Open A/FD** button to view the most current A/FD page for the airport that you are viewing.

## Navigating the Airports Tabs

Located on the left side of the **Airports** section is a list of tabs that contain features associated with the airport including: **FBOs, Information, Frequencies, Runways, Procedures, Weather, MOS, NOTAMs, and Remarks.**

## FBOs Tab

Tap the **FBOs** tab will display the various FBO's offered at the selected airport. Swipe the screen to the left to navigate through the different available FBO's.

## Information Tab

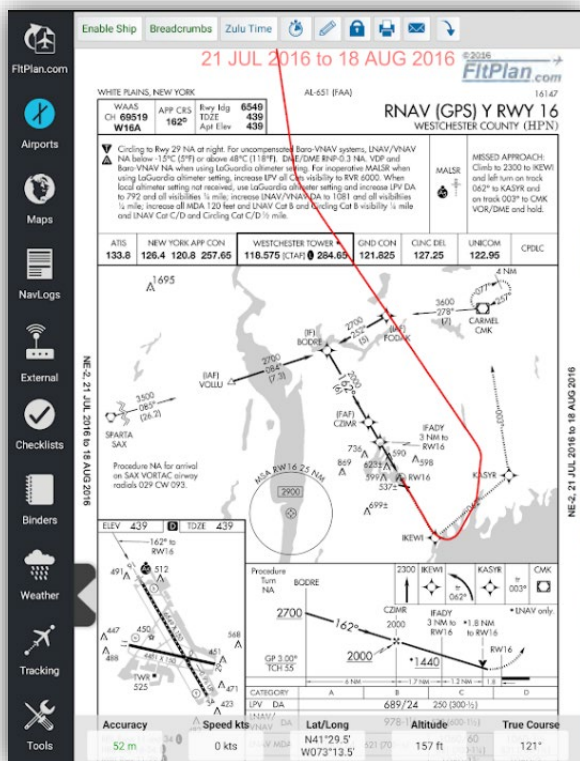
Tap the **Information** tab to view airport information including: AOE, Elevation, Fuel available, Latitude, Longitude, Time zone, and variation.

## Frequencies Tab

Tap the **Frequencies** tab to display the different frequencies including: Clearance, ATIS (Arrival/Departure), Ground, Tower, etc.

## Runways Tab

Tap the **Runways** tab to display different runways and their lengths for the selected airport.



## Procedures Tab

Tap the **Procedures** tab to display the procedures offered. If offered for the selected airport, you will see the takeoff minimums, alternate minimums, LAHSO, Hot Spot, and Airport Diagram sections that you can tap to download and view.

Scroll down in Procedures to see the Instrument Approaches, STARs, and DP/SID Departures. Tap on the particular procedure you want to download and view. If the chart is geo-referenced, it will display a purple arrow icon.

Tap on **Enable Ship** to view your ship position updating on the Procedure.

At the top of the **Procedures** tab there is a **Download All** button. Click on this button and you will download all the documents available associated with the current airport you are on.

## Weather Tab

Tap the **Weather** to display the METAR Reports, Terminal Forecasts, Nearby Departure Airport METARs, and PIREPs. Scroll to view all of the available weather reports.

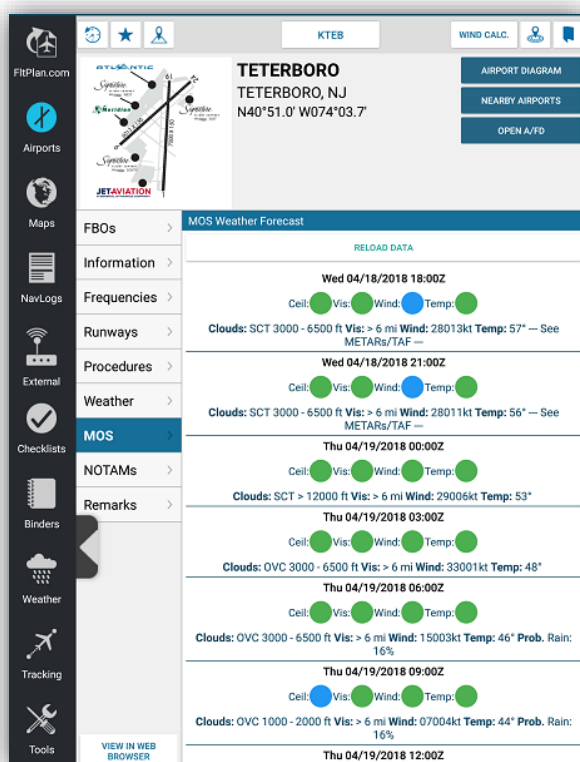
At the top of the **Weather** tab there is a **Refresh** button next to time stamp the last time the weather was refreshed.

## MOS Tab

**MOS** forecasts include important and practical details necessary for pre-flight planning such as temperature, ceiling height, visibility, wind speed and direction, the probability of precipitation, and the precipitation type.

**MOS** forecasts provide weather data for up to four days out, presented in 3-hour windows, and refreshed hourly.

Tap on **Reload Data** to refresh the MOS data to ensure it is the most current.





### NOTAMs Tab

Tap the **NOTAMs** tab and the NOTAMs and FDC NOTAMs will be displayed for the selected airport. Scroll to view all of the available NOTAMs.

On the top of the **NOTAMs** tab there is a **Refresh** button next to the last date and time that weather was refreshed.

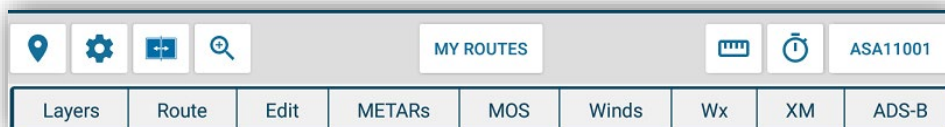
### Remarks Tab

Tap the **Remarks** tab and any remarks that have been published for the selected airport will populate. Scroll to view all of the available remarks.



## Maps Icon

Tap the **Maps** icon from the Dashboard and you will be brought to the **Maps** section.



The header on the Maps section contains several buttons including: **My Routes**, **Nearby Me**, **Options**, **Split Screen**, **Zoom**, **Measure Tool**, and **Timer**.

Beneath these buttons are all the map options including: **Layers**, **Route**, **Edit**, **METARs**, **MOS**, **Winds**, **WX**, **XM** and **ADS-B**.

### My Routes Button

Tap on **My Routes** button to view routes that are stored in your FltPlan.com account, and the option to create a new route.

Tap any of the stored routes listed in the **My Routes** pop-up and the route will populate on the designated map, along with the fixes beneath the **Edit** section.

To create a new route, tap the **Create new route** button from the **My Routes** pop-up window and the **Edit** section will expand. In this text box you can type in a route or search for airports, intersections, and VORs/NDBs along your route of flight.

To delete a Local route from the **My Routes**, tap and hold on the route you wish to delete. A pop-up window labeled **Notice** will appear asking if you want to delete this route, then tap the **Yes** button.

To refresh your saved routes, tap the **Refresh Routes** button in the lower right corner of the **My Routes**.

My Routes
Account Routes (INSTR)
KDAL to MMSL 09/15/16 06:00 N30CL
KOXC to KUUU 09/16/16 10:00 N1234A
KLGA to KMIA 09/16/16 11:00 N1234A
KOXC to KTEB 09/16/16 06:00 N987AB
KLGA to KMIA 09/17/16 10:00 N1234A
KLAX to KEWR 09/21/16 09:00 N1234A
KATL to KMIA 09/21/16 10:00 N1234A
KTEB to KATL 09/22/16 09:00 N1234A
KSUS to KATL 09/23/16 09:00 N1234A
KTUS to KSFO 09/23/16 09:00 N56GLF
KSFO to CYYC 09/24/16 03:00 N733CF
KOXC to KATL 09/24/16 07:01 N1234A
KOXC to KBDQ 09/25/16 09:00 N1234A
KOXC to KUUU 09/25/16 10:00 N1234A



## Procedure Overlay on Maps

Display approach plates and procedures directly on the map for airports included on a displayed route or for any airport containing procedures.

To view approach plates directly on your route, first display your route on the map from the **My Routes** button.

Then, tap your arrival or departure airport and an information window will appear containing airport information such as Latitude, Longitude, the City it is located in, Fuel available, Elevation, Variation, Clearance, Arrival ATIS, Departure ATIS, Ground and Tower frequencies, and three buttons including **View Runways**, **View Airport**, and **View Procedures**.

Tap the **View Procedures** button and the downloaded procedures for this airport will appear.

If these procedures are downloaded you will see a green checkmark to the right, and if the procedures are geo-referenced you will see a purple slanted arrow.

Tap the procedure and it will display geo-referenced along your route.

To the right you will see a **Plate Options** button related to the approach plate that is displayed over the map. Tap this button and a pop-up window labeled **Procedure Options** will appear.

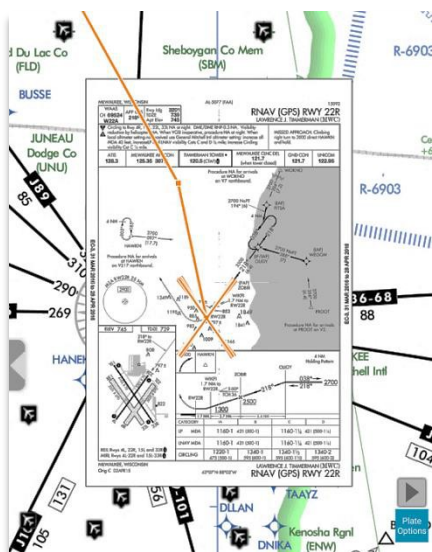
The **Procedure Options** window contains several options, including a **Remove button** in the top right corner, an **Opacity scale**, **View Airport** tab, and **View Procedures** tab.

KFTL	
Latitude	26.07
Longitude	-80.15
City	FORT LAUDERDALE
Fuel	JET/AVGAS
Elevation:	65.0
Variation:	6.0
Clearance:	128.4
Arrival ATIS:	135.0
Departure ATIS:	135.0
Ground:	121.4/121.7
Tower:	119.3/120.2
<button>View Runways</button>	
<button>View Airport</button> <button>View Procedures</button>	
<button>Close</button>	



Procedure Options		Remove
Opacity		
<div></div>		
View Airport		
View Procedures		
<button>Close</button>		





To remove the current approach plate displayed, tap the **Remove** button and the maps will return to the original form without an overlay.

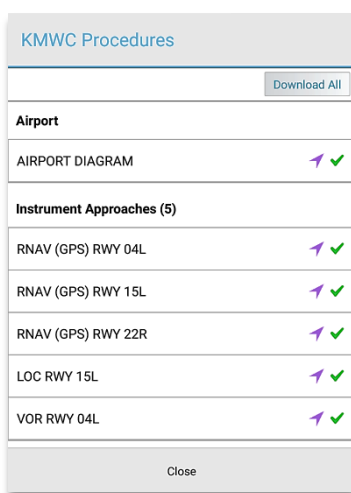
To change the opacity of the procedure displayed, tap and hold on the switch beneath the **Opacity** label. To increase opacity move the switch to the right and to lower opacity move the switch to the left.

Tap the **View Airport** button to view additional airport information for the selected airport. Tap the **View Airport** button and you will be redirected to the **Airports** section of the FltPlan Go app.

Tap the **View Procedures** button to view additional approach plates and procedures available to view on the map.

To view approach plates on an airport not included in a route, tap the **Layers** tab on the **Maps** header.

Tap the **Airports** layer to view airport icons on the map. If you do not have the **Airports** layer downloaded, go to the **Downloads** section of FltPlan Go, Tap **Maps**, then **Layers**, then the **Airports Layer** button to download the **Airports** layer.



After selecting the airports layer, small airport icons will appear on the map. Tap the airport icon corresponding to the airport you wish to display an approach for.

An information window will appear containing various airports information. Tap the **View Procedures** button and all the procedures for this airport will appear.

If these procedures are downloaded you will see a green checkmark to the right, and if the procedures are geo-referenced you will see a purple slanted arrow.

Tap the procedure you wish to display and it will overlay on the map.





## Nearby Me

KOXC, WATERBURY-OXFORD  
OXFORD, CT

CT52, FLYING RIDGE AIRSTRIP (PRVT)  
NEWTOWN, CT

CT01, WHELAN FARMS  
BETHLEHEM, CT

K11N, CANDLELIGHT FARMS  
NEW MILFORD, CT

KJSD, SIKORSKY HELIPORT  
STRATFORD, CT

CT41, GENERAL ELECTRIC HELIPORT PVT  
FAIRFIELD, CT

KDXR, DANBURY MUNI  
DANBURY, CT

CT96, GREEN ACRES (PRIVATE)  
BRISTOL, CT

KBDR, IGOR I SIKORSKY MEMORIAL  
BRIDGEPORT, CT

KMMK, MERIDEN MARKHAM MUNI  
MERIDEN, CT

## Nearby Airport Options

Go to Airport

Display on Map

Direct To

Cancel

## Nearby Me Button



The next button on the **Maps** section toolbar is the **Nearby Me** button. Tap this button and a pop-up window will appear with the ten closest airports.

Tap on any of the airports that appear in the **Nearby Me** pop-up window and you will be redirected to the **Airports** section of the app with that airport's information displayed.

If you wish to display a nearby airport directly on the **Maps** section of the app, tap and hold on an airport that is displayed in the **Nearby Airports** pop-up window, and the **Nearby Airport Options** pop-up window will be displayed.

From this window you can choose to **Go to Airport**, **Display on Map**, file **Direct To** or exit this window by tapping **Cancel**.

## Options Button



Tap **Options** to view the list of different features offered for maps including: Orientation, Map & Ship Options, Route & Icon Options, Breadcrumbs, and Go to Airport.

## Orientation

There are three map orientation options that you can choose from including North Up, Track Up, and Track Forward.

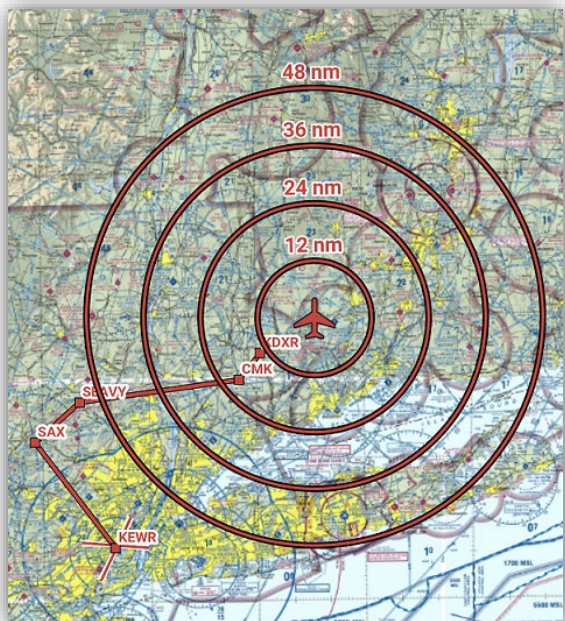
## Map & Ship Options

**Downloaded Maps Only:** Toggle Downloaded Maps Only when you are offline and need to view the downloaded maps. You must have maps downloaded first in Downloads.

**Auto-Center Position:** Auto-Center centers the map around your ship position on the map.

**Display Ship Position:** Toggle Display Ship Position to display/remove your ship position on the map.

**Toggle Range Circle Rings:** Enable Range Rings to view distances in nautical miles.





## Route & Icon Options

In this section there are several options you can choose to check off or display including: Toggle Runway Centerlines, Display Route Fix Labels, Customize Route & Ship Icon, and Customize Airport Icon.

## Breadcrumbs

The next section within the **Options** button is the **Breadcrumbs** section. In this section there are several options, including **Toggle Breadcrumbs**, **Save Breadcrumbs**, **Clear Breadcrumbs**, and **Breadcrumbs List**.

To use the breadcrumbs feature, turn **Toggle breadcrumbs** on. Your aircraft will now display a color coded trail, or breadcrumbs, of the flight path.

After the flight, make sure to select **Save Breadcrumbs**.

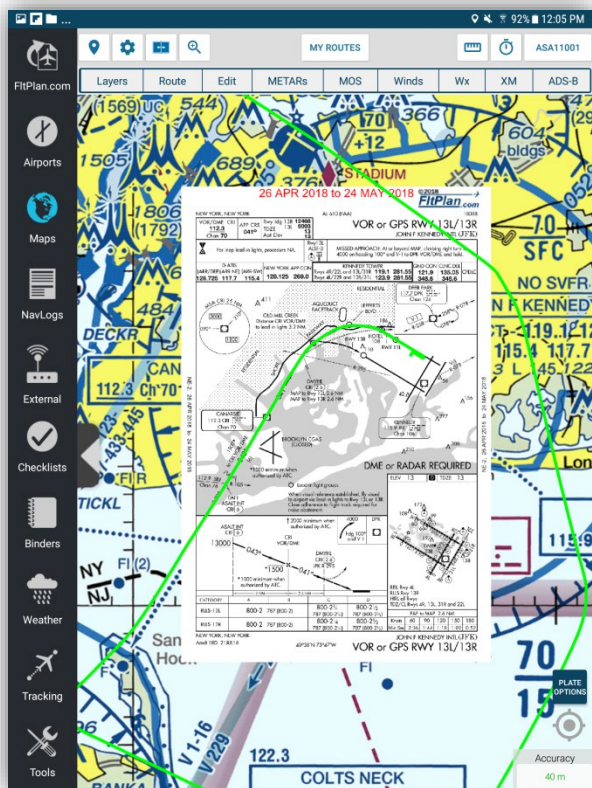
To view saved breadcrumbs or download breadcrumbs from online, click on the **Breadcrumbs List** option.

Saved Breadcrumbs are breadcrumb files that are locally saved in FitPlan Go on your device.

Online Breadcrumbs are breadcrumb files that are saved to your FitPlan account which allows you to display breadcrumb files on any device as long as you sign into your account.

## Go To Airport

Click on the **Go to Departure Airport** or **Go to Arrival Airport** buttons and you will be redirected to the **Airports** icon and that airport's information will be displayed.





## Split Screen Button



Tap **Split Screen** to view the split screen displays including: **Airports, Departure Procedures, Arrival Procedures, NavLogs, Howgozit, Weather, ScratchPad, and Tools.**

Tap the option you wish to display and the screen of your device will be divided either horizontally or vertically (depending on the tablet orientation) with your Map as one side and the chosen display option as the other.

After selecting your split screen displays, tap the **Split Screen** button again and you'll notice the **+** and **-** display options along with the **Exit** button.

Tap the **+** or **-** button and the additional display added to the split screen will either take up more or less of the screen.

To exit the **Split Screen** display, tap the **Split Screen** button and tap the **X** in the upper right corner of the **Split Screen Options** pop-up window.

**Howgozit:** HowGozit is the companion to our highly accurate NavLog. HowGozit gives you real time progress of how your flight is proceeding along your route.

When you pass a point, just enter your time over the fix and fuel on board. HowGozit will not only give you an accurate new ETA, it will let you know your planned fuel on board upon landing.

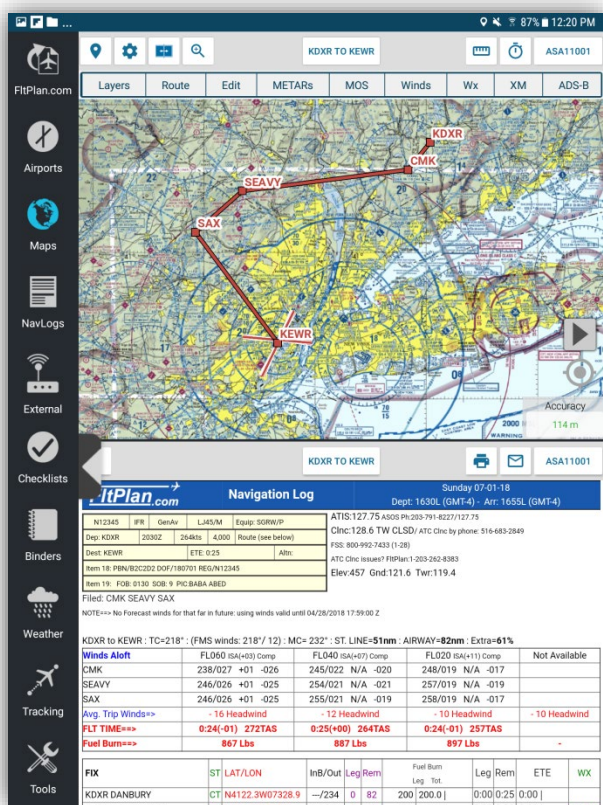
If you have GPS on your device, HowGozit automatically gives you the time over the fix, eliminating the need to manually enter it. The numbers are based on our precise NavLog figures and not just your current ground speed.

## Zoom Options Button

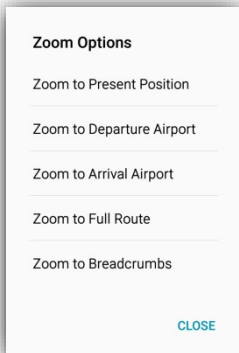


These options include Zoom to Present Position, Zoom to Departure Airport, Zoom to Arrival Airport, Zoom to Full Route, and Zoom to Breadcrumbs.

Tap any of these buttons to have the map view zoomed into your desired position.



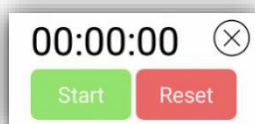
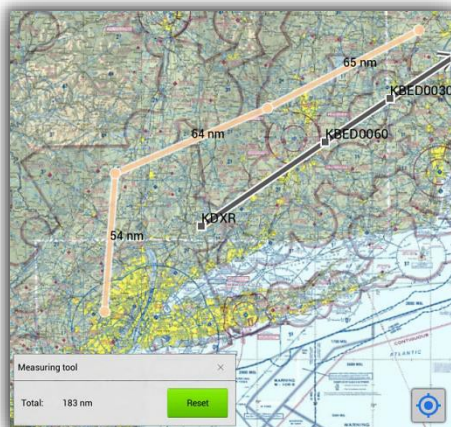
Departure: 20:30 Z		Updated Arrival: 20:54 Z	
Est. Arrival: 20:55 Z		Updated Fuel: 613	
Location	Time		Fuel
Fix	ETA	ATA	Score
KDXR	20:30 Z	20:30 Z	0
CMK	20:33 Z	20:34 Z	+1
SEAVY	20:41 Z	20:42 Z	+1
SAX	20:45 Z	20:44 Z	-1
KEWR	20:55 Z	20:54 Z	-1







## Measuring Tool



To use the **Measurement Tool**, tap the first point on the map you would like to calculate the distance from, and then tap the next point. An orange line will appear between your first tapped points to each addition point, with the distance in nautical miles labeled on the orange line.

In the **Measuring Tool** pop-up window you will see the calculated total of nautical miles based on the points tapped on the map.

To reset this total, tap the green **Reset** button in the lower left corner of the **Measuring Tool** pop-up window.

## Timer Tool



Tap the Timer button and a small clock will appear in the upper right corner of the page.

Tap the green Start button to begin the timer. The button will change to red and read Stop. Tap the red Stop button to stop timing.

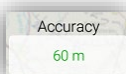
This feature can be used to time your approaches, take-offs, landings, and much more.

## Auto-Center Button

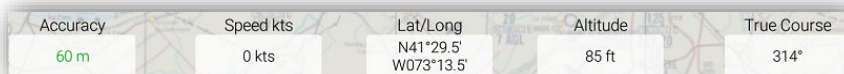
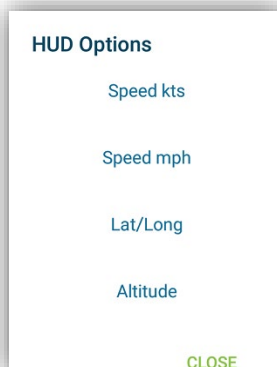


Located in the lower right portion of the map display screen is the **Auto-Center** icon. Tap on this icon and it will automatically center the view of your aircraft on the map.

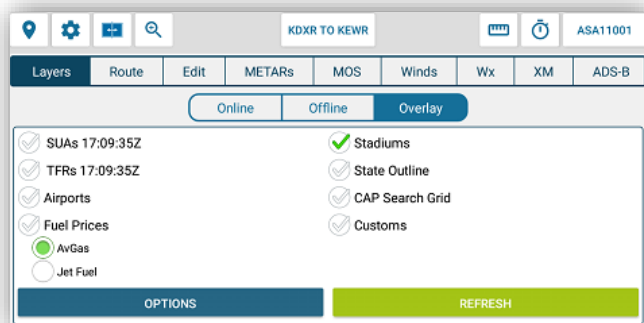
## HUD



Located in the lower right portion of the map display screen is the **HUD** (Heads-Up-Display). This display gives you real-time information regarding your flight. Expand the HUD by tapping on the icon and sliding left. Hid the HUD by tapping on the icon and sliding right.



Change the fields displayed in the HUD by tapping on the title to display HUD Options including: Speed (kts), Speed (mph), Lat/Long, Altitude, True Course, Magnetic Course, Bearing (Next), Distance (Next), Distance (Dest.), and ETE.



## Layers Button

Tap on **Layers** to display various map layers including:

**Online:** North America, World Map, Satellite, Street, Topographic, Shaded Relief.

**Offline:** Sectionals, Jet High, Victor Low, TACs, Helicopter, and IFR Terminal. Tap on the region to display United States, Canada, and Caribbean maps. These map layers need to be downloaded before offline use by going to Downloads – Maps.

**Overlay:** SUAs, TFRs, Airports, Fuel Prices, Stadiums, State Outline, CAP Grid Search, and Customs.

Tap on any selection to display on the map. Tap on the icon on the map to display additional information.

Tap on **Options** to adjust the opacity for SUAs & TFRs as well as the State Outline.

## Route Button

Tap on **Route** and your selected route will be displayed in legs, broken up by points with the course in degrees and distance in nautical miles for each leg.

## Edit Button

Tap on **Edit** to display and edit each fix on your route. From **Edit** you can update your route or create a new route by typing in fixes or rubber-banding the route.

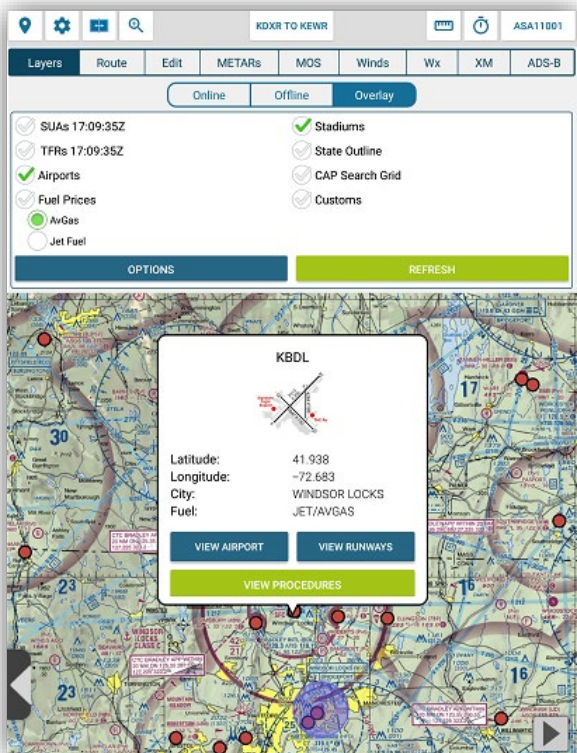
## Done & Clear Buttons

Tap the **Done** button when you have completely edited and completed the route, and the **Done** button will scan your route and highlight portions red that could pose a problem in filing your flight plan. Tap on **Clear** to clear the Edit box field.

## Reverse Route Button

Tap the **Reverse** button to have your present route that is displayed in the **Edit** button window reversed.

This feature is useful in making a return trip using the same points, but in the reverse order.





### Create Flight Plan

REFRESH PILOT & AIRCRAFT DATA

Date:	07/01/2018
IFR or VFR:	IFR
Departure:	KDXR
Arrival:	KEWR
PIC / Captain:	JOE PILOT
SIC / Co-Pilot:	No Co-Pilot
Aircraft:	N12345
Call Sign (optional):	
Depart Time:	16:30
Souls on Board:	4
Alternate:	
Suggested Alt:	
Remarks:	
P/u Clearance Fix (optional):	
Route:	CMK SEAVY SAX

CLOSESAVESAVE & FILE

### Custom Waypoint

Name:	SAMPLE
Description:	Optional
Latitude:	41.123
Longitude:	-73.123

Valid coordinate inputs:  
41.12345 / -73.12345  
41 25N / 073 58W  
41 25.78N / 073 58.12W  
41 25 45N / 073 58 57W

MANAGECANCELADD

### User Waypoints

SAMPLE

41.123 / -73.123

EXPORTSHOW ALL

DELETE ALLCLOSEADD

## P/P Button

Tap **P/P** to have your present position Lat/Long entered into your route. Tap within the route where you would like to place the **P/P** and then tap the **P/P** button.

## Save Button

Tap Save to save the flight plan locally to the tablet. Saved flight plans will be listed under My Routes – Local Routes.

## Save/File Button

Tap on **Save/File** to save or file the flight plan with FitPlan.com. Tapping Save/File will prompt the option to create a flight plan via web or app.

**Web** will open the flight plan in FitPlan.com

**App** will display a Create Flight Plan Menu where you enter the flight information. Enter the required flight information to save or file the flight plan in your FitPlan.com account.

## Create a flight plan from within FitPlan Go

Tap on **Edit – Save/File – App** and enter the required fields. Update the route and tap on **Save/File** which will automatically send the flight plan to be filed in your account with FitPlan.com.

## Waypoints Button

Tap on **Waypoints** to add or view a list of entered waypoints. You can add these waypoints to the route or export the waypoint files.

Tap on **Add** to enter new waypoints. This will prompt the **User Waypoints** entry form where you enter the Name, Description, Lat/Long. Make sure that you enter the Lat/Long in the correct format or the entry will not save.

Tap on the waypoint in the list to add it to your route in Edit.

Tap on **Manage** to edit an existing Custom Waypoint.

Tap on **Show All** to display all Custom Waypoints on the map.

Tap on **Export** to export all Custom Waypoint files.



## Procedures Button

Tap **Procedures** to visually display the SIDs/STARs available for the selected route on the map. Tap on the SID/STAR on the map to add it to your route or view the procedure.

In the bottom right corner of the screen a Settings icon will display titled SID/STAR Options. From here you can display various departure or arrival procedures, choose to add them to your route, or change the opacity of how they are displayed on your map.

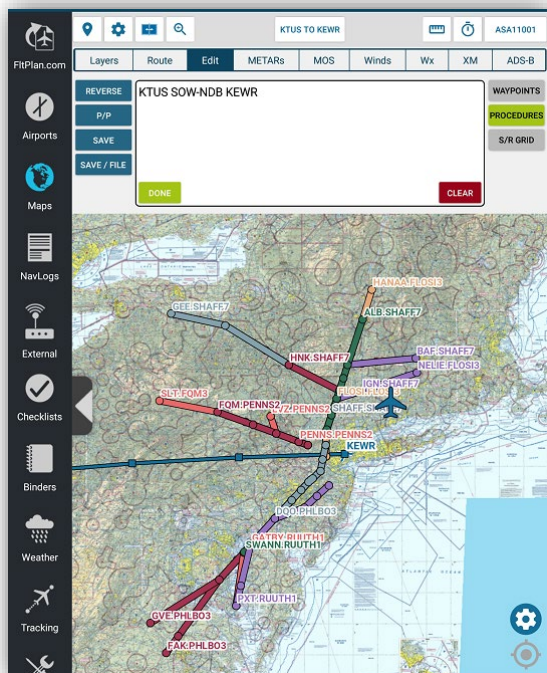
## S/R Grid Button

Tap on **S/R Grid** to enter Search and Rescue Grids in your route to display on the map.

Tap on S/R Grid an entry box will display labeled **Add to Route**. In this pop-up window enter the information and parameters of the grid you to create.

The fields that require information include Waypoint, Pattern (choose from Parallel, Sector, Expanding Square, Creeping Line, Route, Grid Aligned) Initial Degrees, Initial Turn, Leg Length (in nm), Space Length (in nm), and Leg Count.

When finished entering the above information tap the **Add** button in the bottom right corner of the pop-up window. The grid will then be generated on the map along your route.



Add to Route

Waypoint:

KEWR

Pattern:

Parallel

Initial Degrees:

0

Initial Turn:

☒ Left ☐ Right

Leg Length (nm):

5

Space Length (nm):

.5

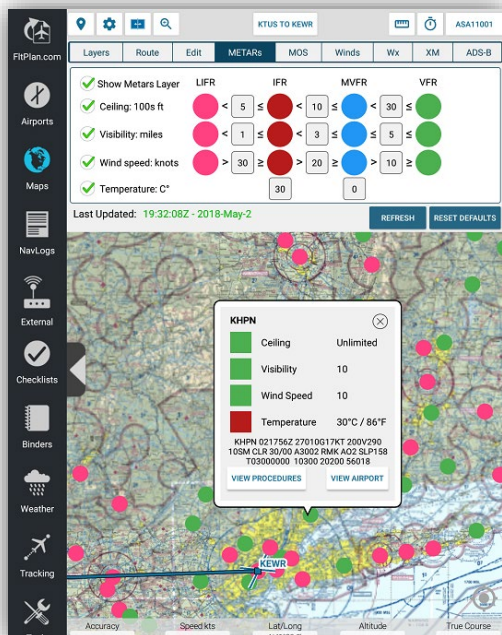
Leg Count:

10

Cancel

Add





## METARs Button

Tap **METARs** to view **METARs** based on Ceiling, Visibility, Wind Speed, and Temperature. You can set the parameters of the METARs for your specific flying needs including: LIFR, IFR, MVFR, and VFR conditions.

To view METARs based on specific parameters, tap within the textbox for the conditions and enter the value.

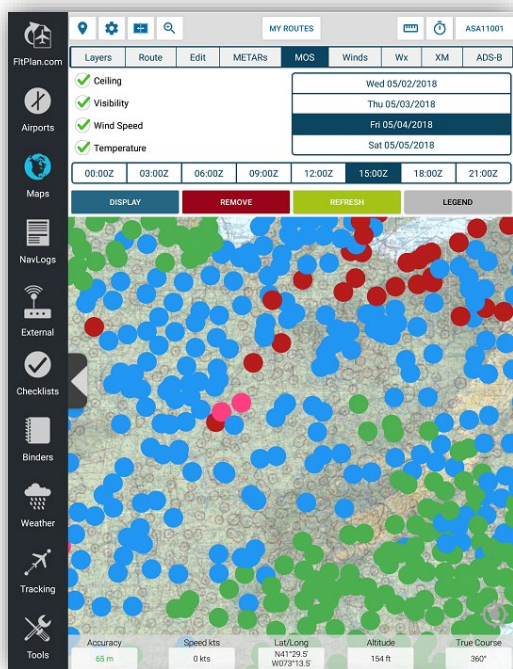
You can select multiple factors at once or tap the **Show METARs Layer** to display all factors with all conditions on the map.

Beneath the parameters set to qualify for LIFR, IFR, MVFR, VFR are two buttons, Reset Defaults and Refresh.

Tap the **Reset Defaults** button to reset the parameters of what qualifies for LIFR, IFR, MVFR, VFR flight.

Tap the **Refresh** button to have the most recent METARs displayed.

Tap on a specific colored circle on the map and a pop-up window will appear with the specifics of the METAR location and airport that you have selected.



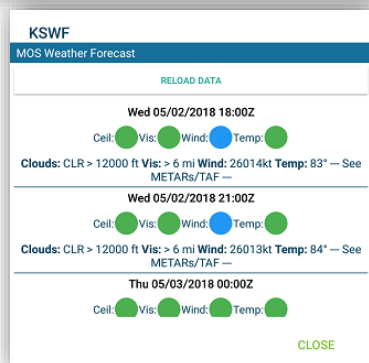
## MOS Button

MOS forecasts include important and practical details necessary for pre-flight planning such as temperature, ceiling height, visibility, wind speed and direction, the probability of precipitation, and the precipitation type.

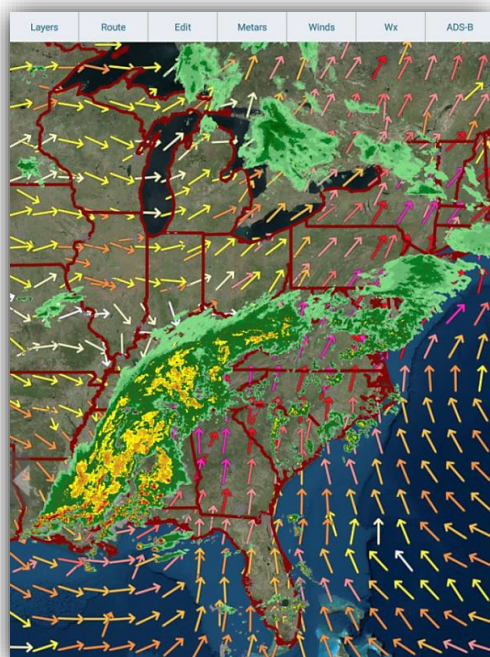
MOS forecasts provide weather data for up to four days out, presented in 3-hour windows, and refreshed hourly.

To display MOS on the map, select the conditions, date and time and select **Display**. MOS icons will display on the map, tap to expand additional MOS details.

Tap **Remove** to remove the MOS layer from displaying on the map.







## Winds Button

Tap **Winds** to select the parameters to display winds on the map. Choose between Color coded arrows and wind barbs.

Tap the checkbox next to wind speed and which region you want winds displayed for, United States (CONUS) or Canada/Alaska.

Select Flight Level by tapping on the drop down menu next to Wind Speed (kts) at.

Tap on an arrow or wind barb that is displayed on the map to view additional wind information including: Altitude, Direction, Wind Speed, and ISA Temp.

## WX Button

Tap on **Wx** to choose which Baron Weather to display on your map in conjunction with your route including: Radar, Canadian Radar, Alaskan Radar, Surface Analysis, IR Satellite, Visible Satellite, and Echo Tops, and Lightning.

Beneath the Baron Weather section you can select the Weather Opacity by sliding the switch to the right and left.

## Animated WX



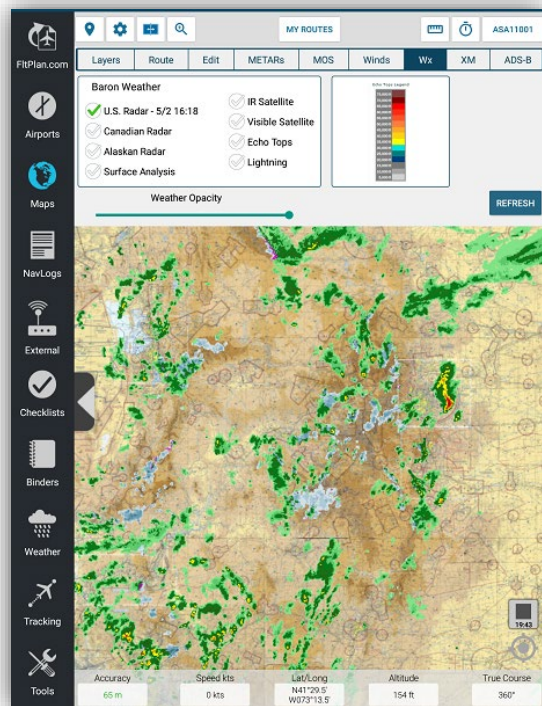
To display Animated Weather on the map, select any of the Radar options.

When the weather displays on the map a **Play** button will appear in the lower right corner of the screen. Tap this button to start the animated weather, please allow a few seconds for the weather to load and begin animation.

To turn off animated weather, tap the **Stop** button and the animated weather will pause.

## XM Button

Tap on **XM** to connect to XM Weather and toggle on weather options to display on the map.





## ADS-B Button

Tap on **ADS-B** to toggle on ADS-B options for Traffic and Weather including: Regional & CONUS Radar, Traffic, NOTAMs, METARs, TAFs and Traffic Breadcrumbs.

Please note that you must be connected to an ADS-B unit to receive up to date Traffic and Weather information. To connect to an ADS-B unit, go to the **External** tab and select the unit.

Beneath the ADS-B information there is a **Refresh** icon. Tap this icon to have the most current ADS-B information available.

Tap on a traffic icon on the map to view information including: Callsign, Lat/Long, Altitude, Speed, Course, and the Last Update.

Tap on a weather icon to view NOTAM, METAR, and TAF information. NOTAMs are purple, METARs are green, and TAFs are blue.

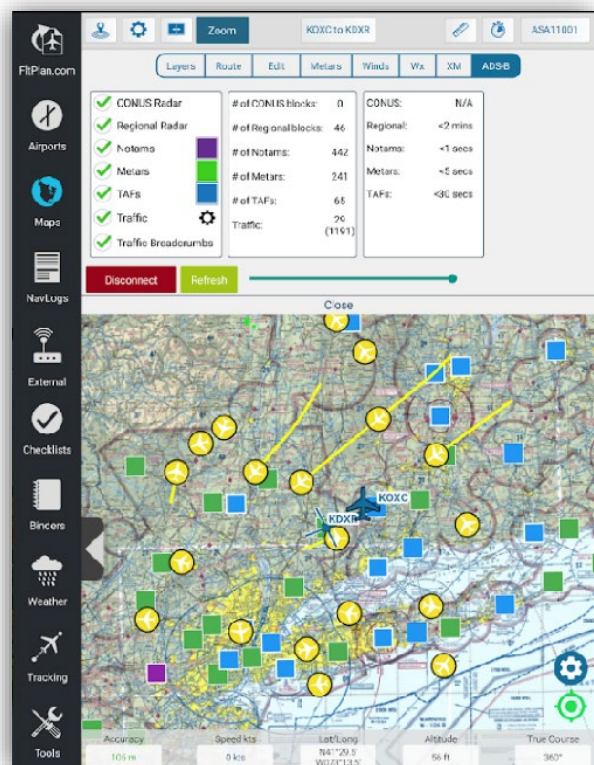
Tap on the settings icon next to **Traffic** to view additional traffic options including:

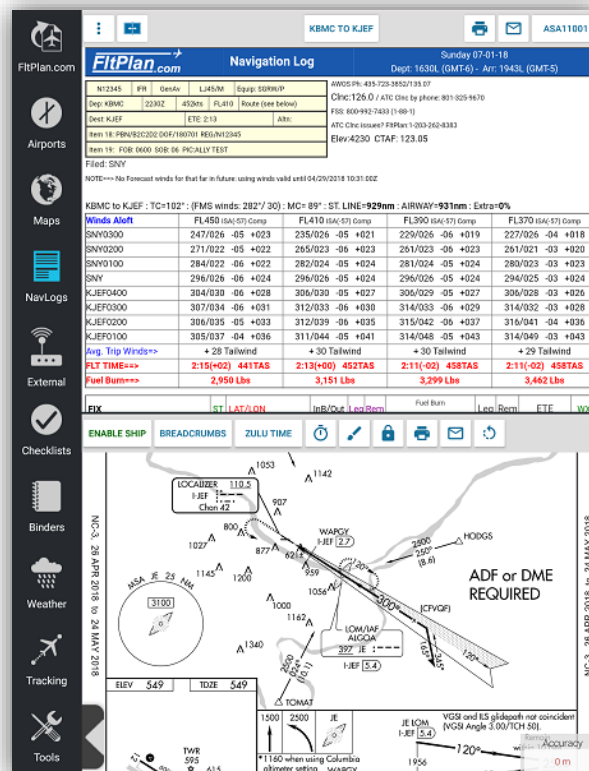
**Callsign:** Enter your tail number in this section to prevent it from displaying as a traffic icon on the map.

**Minimize Distant Traffic:** Hide the gray ring around traffic icons.

**Hide Distant Traffic:** Hide traffic that is greater than 3,000ft & 8 miles.

**Display Relative Altitude:** Display the traffic's relative altitude.





## NavLogs Icon

Select NavLogs to display and download your NavLogs.  
NavLogs are automatically synced from FltPlan.com when  
you create a flight plan.

## NavLog Options Button

Tap NavLog Options to **Refresh Current NavLog**, **Download all NavLogs for today**, and view the **Departure Airport**, and **Arrival Airport**.

## Split Screen Button

Tap the **Split Screen** button and the **Split Screen Options** pop-up window will appear with the different split screen displays including **Airports, Departure Airport Procedures, Arrival Airports Procedures, NavLogs, Howgozit, Weather, ScratchPad, and Tools.**

Tap the option you wish to display and the screen of your device will be divided either horizontally or vertically (depending on the orientation you are holding it to) with your Map as one side and the chosen display option as the other.

After selecting your split screen displays, tap the **Split Screen** button again and you'll notice the **+** and **-** display options along with the **Exit** button.

Tap the **+** or **–** button and the additional display added to the split screen will either take up more or less of the screen.

To exit the **Split Screen** display, tap the **Split Screen** button and tap the **X** in the upper right corner of the **Split Screen Options** pop-up window.



## NavLogs/WX Button

Tap on **NavLogs/WX** to display the list of NavLogs synced from your FtPlan.com account.

Tap on the NavLog to download and display for offline use.

If you have not downloaded the NavLog for a particular route, a **Download** button will appear to the right of that route description, along with a notice labeled, **not downloaded**.

If the NavLog is for a current route, there will be a **Refresh** button in place of the **Download** button, so that you can refresh your downloaded NavLog.

## Email NavLog

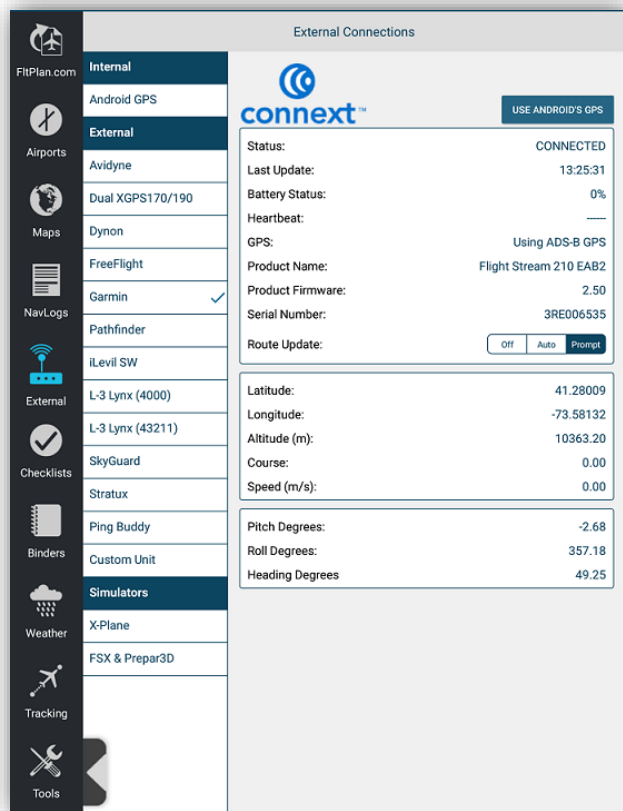
Tap on the **Print** or **Email** buttons to send the NavLog to a wireless printer or email the NavLog.

## Zoom In/Zoom Out Arrows



Tap the NavLog page itself and to the bottom right of the screen you will see two small, grey magnifying glass icons, representing **Zoom In** and **Zoom Out**. Note that this is on the NavLog screen itself and not contained in a pop-up window.





## External Icon

From the **External Connections** page you can connect to your external devices including GPS units, ADS-B units, Avionics, and Simulators.

Tap on the device you wish to connect to from **FitPlan Go** and the device information will appear on the right side of the **External Connections** page. Please note that you must first connect your tablet to the external device via Wi-Fi or Bluetooth.

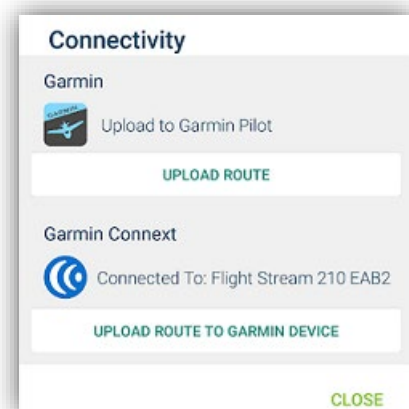
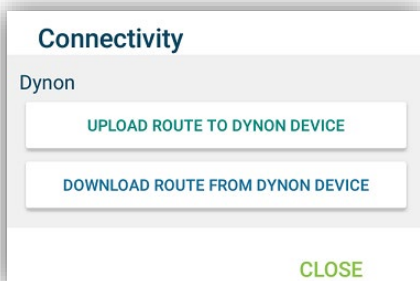
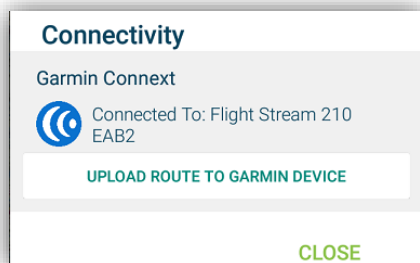
You will now be connected to your external device and the fields on the **External Connections** page will begin to populate with the data specific to your chosen device. These fields will automatically contain default information when your connection is inactive (i.e. "0 ft" and "0 Knots").

The **External Connections** page will default on the **Internal Android GPS**. If your tablet supports cellular capabilities, you will not need an external GPS unit to update your position.

Once connected to the unit, go to **Maps – ADS-B** to toggle on ADS-B options to display updated ADS-B Traffic and Weather on the map.

FitPlan Go for Android currently connects to the following units:

- Garmin
- Avidyne
- Dual XGPS 170/190
- Dynon
- Freeflight
- Pathfinder
- iLevil SW
- L-3 Lynx
- SkyGuard
- Stratux
- pingBuddy
- Custom Unit
- X-Plane
- FSX & Prepar3D
- Dual XGPS 150
- Bad Elf



## Flight Plan Transfer



Avionics units including Garmin (Flight Stream 210/510), Avidyne 540/440, and Dynon allow for flight plan transfer to/from FtPlan Go.

Connect to the unit on the **External** tab and then go to **Maps – Connectivity** which will display the option to send or receive the flight plan. The Connectivity icon will only display if FtPlan Go is connected to the unit on **External**.

**Upload:** Select a route in **Maps – My Routes** which will display in the **Edit** box. Edit the route if necessary by typing in fixes or rubber-banding and tap on **Upload** to send the flight plan to the unit.

**Download:** Select **Download** to receive the flight plan from the avionics unit. The flight plan will display in the **Edit** box.

Please note: Garmin flight plan options are on the **External** tab. Options include Auto, Prompt, and Off.

For a full list of FtPlan Go Connectivity Options, click [here](#).

## App to App

FtPlan Go has the option to send flight plans and NavLogs from FtPlan Go to Garmin Pilot.

Tap on the **Connectivity** icon located on the Maps or NavLogs icon and select **Upload Route** under Upload to Garmin Pilot.

Please note: you must have Garmin Pilot installed first.

## Connect to External GPS

The steps use an **External GPS** unit are as follows:

1. Connect the External GPS to the tablet via Wi-Fi or Bluetooth
2. Ensure Location Services are enabled for FtPlan Go in the tablet Settings
3. Open FtPlan Go
4. Under **External** tab make sure it's set to Internal GPS and wait for data to populate
5. Under Maps – Options – ensure Enable Ship Position is enabled
6. The app will now be using your External GPS

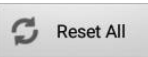


## Checklists Icon

Tap the **Checklists** icon to view all Checklists synced from FitPlan.com. Tap the desired aircraft to view to that particular checklist.

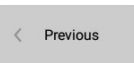
**Note:** You can only create or edit a checklist from the FitPlan.com icon, or on the [www.FitPlan.com](http://www.FitPlan.com) website itself.

### Reset All Button



The **Reset All** button in the top left corner of your checklist is used to reset all of your checklists. When checklists are reset, all of the items will be marked as unchecked.

### Previous Button



Tap the **Previous** button to return to the previous page, which contains the checklists for all of the different aircraft in your account.

### Next Button



Tap the **Next** button to advance to the next checklist you entered for your selected N number.

### Done Button



Tap the **Done** button to indicate that you have checked that item and it is checked off the list.

### Skip Button



Tap the **Skip** button to skip over checking off a particular item, which will mark the unchecked item yellow.

After you have finished checking off or skipping all of the items for a particular checklist, you will get a pop-up window labeled, **Notice** stating that the checklist has skipped an item, and if would you like to be redirected to that skipped item.



### Reset List Button



Tap the **Reset List** button to set the checklist back to having all items unchecked.



## Binders

Tap **Binders** to add important trip information into a single Binder for easy access.

At the top left of the **Binders** section is a button labeled, **New Binder**. Tap this button and a new binder icon will appear in the **Binders** section labeled, **Binder #**.

### Binder Icon

Tap and hold on the **Binder** icon and a pop-up window will appear with the options to **Open**, **Delete**, and **Rename** the binder.

### Open Button

Tap the **Open** button and you will open the new binder.

Once in the new binder you will see an icon labeled, **Add New**. Tap the **Add New** icon and a pop-up window labeled; **Choose an item** will appear with a list of places to retrieve documents from. You can then add the documents to the select binder.

The places to choose documents from include **Procedures**, **Airports**, **A/FDs**, **Documents**, **NavLogs**, **Weather Brief**, **FltTrack Tail Number**, and **ScratchPad**.

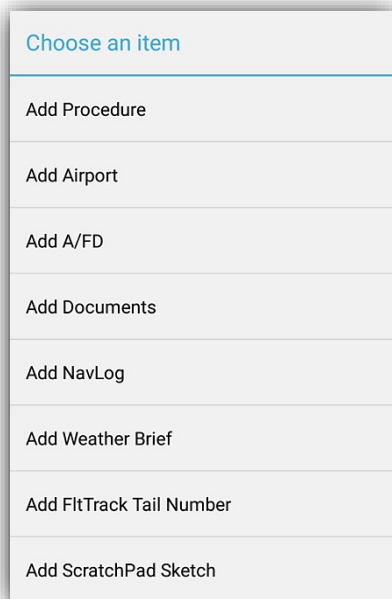
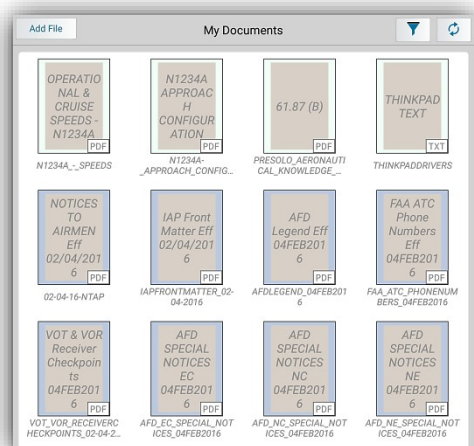
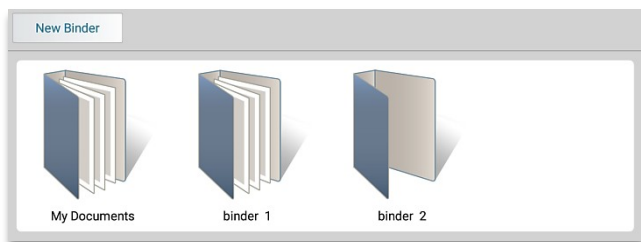
### Delete Button

To delete a binder, tap and hold on the binder icon you wish to delete.

### Rename Binder Button

To rename a binder, tap and hold on the binder icon you wish to rename.

A pop-up window will appear labeled with your binder's name. Tap the **Rename** button and a pop-up window labeled; **Rename** will appear with a text box with the current name of your binder.







## Weather

Tap on the **Weather** icon to view Wx for the Route or Location.

### Tap to Get WX Button

Tap the **Tap to Get WX Button** and a pop-up window will appear labeled, **Weather**. There will be the option to select between **Show Route Weather** and **Show Location Weather**. Enter the airport IDs and tap on Get Wx to view the current weather.

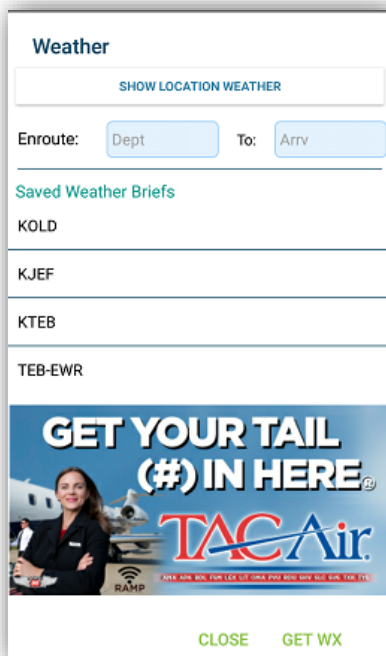
The **Weather** page will then display the Forecast, METAR Reports, TAFs, Terminal Forecasts, NOTAMs, FDC NOTAMs, and PIREPs for your searched airport. Beneath the weather reports is a list of nearby airports.

At the bottom of the **Weather** page you will see a map with a red designator indicating where your airport lies.

If you are viewing **Route Weather** you will see the Current METAR Grid.

### Refresh

The **Refresh** button is located in the upper left corner of the Weather page. Tap the **Refresh** button and the weather reports will be refreshed to represent the most current weather.





## Tracking

### My Aircraft Button

Tap the **My Aircraft** button to enter the tail number of the aircraft that you wish to track.

If you already have an aircraft set up for tracking through the website, you can type in your Tail number then tap the **Track** button.

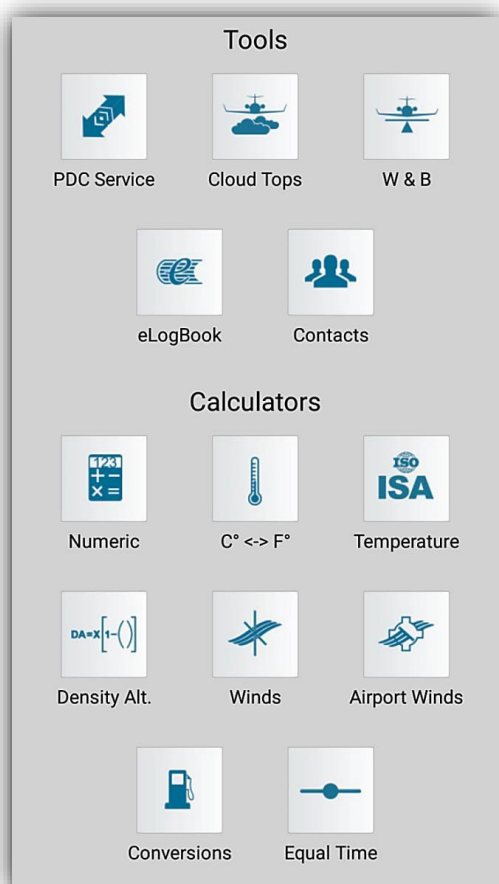
If your searched aircraft is currently flying, you will see information regarding the flights where your aircraft has been tracked.

This information includes **Flight Number, Departure Airport, Arrival Airport, Estimated Arrival Time, Time to Arrival, Status, Altitude, Ground Speed (KTS),** and **Equipment.**

### Switching Aircraft

To track another aircraft, tap the **My Aircraft** button again and enter the Tail number.





## Tools

**Tools & Calculators** include: **PDC Service, Cloud Tops, Weight & Balance, eLogbook, Contacts, Numeric, Temperature Conversion, ISA Temperature, Density Altitude, Winds, Airport Winds, Conversions, and Equal Time.**

### PDC Service

Beneath the label, **PDC Service**, you will see three sections to receive your PDC by entering your **Tail Number, Departure Airport, or Arrival Airport.** Enter the required information and select **Get PDC.**

To delete any saved PDCs tap the **Delete All** button in the lower left corner of the screen.

### Cloud Tops

Tap the **Cloud Tops** icon and the **Cloud Tops** feature will access the camera on your device through FltPlan Go.

Aim your iPad with the center green touching the top of the clouds. When you are satisfied, tap on either Lock button and your camera will take a screen shot.

Next, set your aircraft altitude by tapping on **Aircraft Altitude** and scrolling until you have reached your current altitude.

Next, set your distance in nautical miles by tapping on **Distance (nm)** and scrolling until you have reached your current distance in nautical miles from the cloud tops.

On the top of the screen, the center number is the height of the clouds above sea level (MSL). The number to the right of the center number is the height of the clouds above or below your aircraft.

The distances will display green when flying above clouds, red if headed into or below clouds, and orange when close to clouds.

The smaller numbers located above and below the altitude above the clouds give a margin of error of 0.1 of a degree in either direction.



## Weight & Balance

Weight & Balance profiles are automatically synced from your FitPlan.com account. Tap the airplane icon of the N-number you wish to download and view.

On the **Weight & Balance** information page for your selected aircraft, you will see the already entered **Basic Empty Weight** along with text boxes where you can enter the weights of passengers and baggage according to which type of aircraft you have selected.

You can also enter the **Fuel Units** in either pounds or gallons, the **Fuel Tank Weights** (depending on the aircraft and how many fuel tanks there are), the **Fuel Burn**, and the predetermined **Max. Takeoff Weight**.

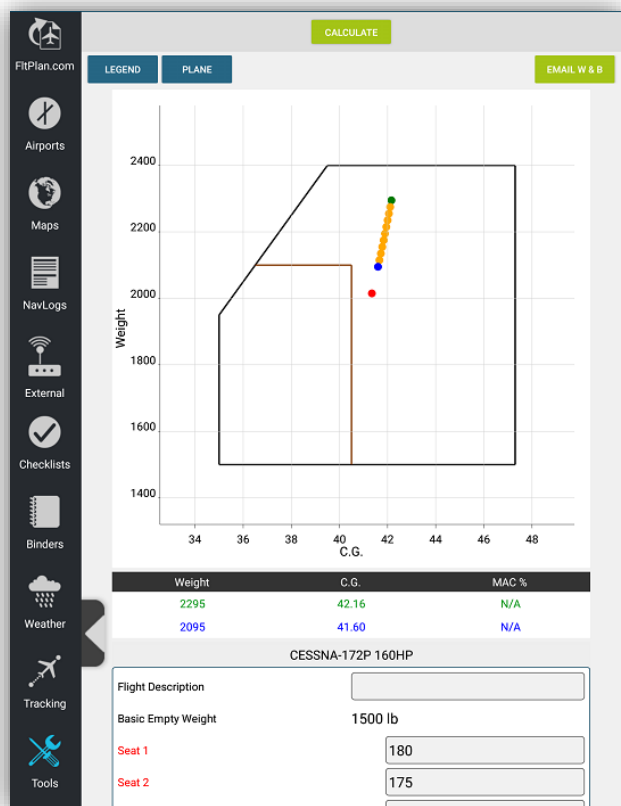
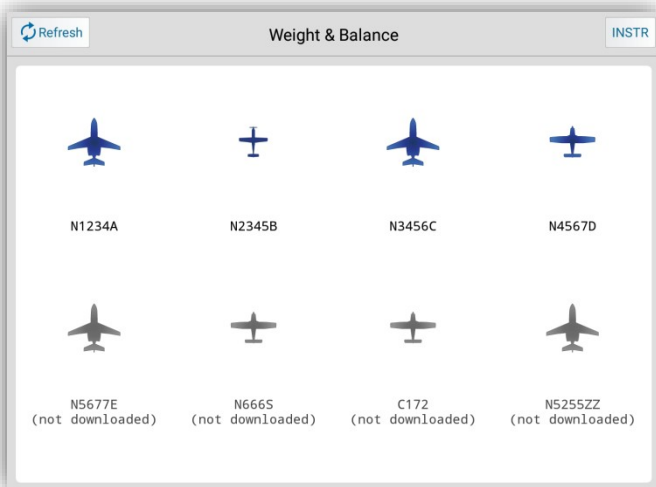
After entering in the weight for required information, tap the **Calculate** button. This will update the Weight, C.G. Graph, and Mac %.

**Legend** displays what the colors indicate on the C.G. Graph.

**Plane** displays a graph of your selected aircraft seating.

Tap on **Email W & B** to email the calculations to the email address in your account.

Note: To add or edit Weight & Balance profiles, go to FitPlan.com - Tools.





## eLogbook

Sync logbook entries to your FltPlan eLogbook account through FltPlan Go.

Sign into your eLogbook account by entering the **Pilot**, **License #**, and **Password**. Once you sign into your account, all of your eLogbook information will be available.

Tap **Aircraft** to select the aircraft and enter the required fields including: Date, Departure Airport, Arrival Airport, and Flight Time.

Select the **Aircraft Category and Class options** and **Conditions of Flight**.

Tap on **Log Entry** to sync the log to your FltPlan eLogbook account.

## Temperature Conversion

The next button on the **Tools** pop-up window labeled, **Choose a Tool/Calculator** is the **Temperature Conversion** tool.

Tap within the text box for either Fahrenheit (F°) or Celsius (C°) to calculate the conversion.

Beneath the calculator is a **Conversion Table** that gives you a formula for calculating either Fahrenheit or Celsius.

## ISA Temp Calculator

There are several sections that make up the **ISA Temp Calculator** page, including **Pressure Altitude**, **Temperature**, and the calculated **ISA Temp**.

Beneath the **Pressure Altitude** label enter your pressure altitude you would like calculated. To the left of the **Pressure Altitude**, choose whether you are measuring in Feet or Meters by tapping in the circle to the left of either label.

Beneath the **Temperature** label enter the temperature in degrees Celsius and then tap the **Calculate** button to have your ISA Temperature at your entered altitude displayed on the bottom of the screen with an ISA deviation number to the right.



## Density Altitude Calculator

The next button on the **Tools** pop-up window labeled, **Choose a Tool/Calculator** is the **Density Altitude Calculator**.

There are four key elements that go into calculating the density altitude, including the **Altitude/Elevation, Current Altimeter Setting, Pressure Altitude,** and **Outside Air Temperature**.

### Altitude/Elevation/Airport ID

When entering the altitude for the given airport, you can enter the known altitude, the elevation of the airport, or the Airport ID of the given airport and the elevation will be imported.

You can either choose to express this number in feet or meters by tapping the ft button or m button to the right of the text box beneath the **Altitude/Elevation/Airport ID** heading.

### Pressure Altitude (press to edit)

Beneath the **Pressure Altitude (press to edit)** heading you can type in the pressure altitude by tapping in the text box below.

To the right of the white text box you can choose to display the pressure altitude in either feet or meters. Tap the ft to display in feet or m to choose to display your pressure altitude in meters.

### Outside Air Temperature

Beneath the **Outside Air Temperature** heading you can type in the temperature by tapping in the text box below.

To the right of the text box you can choose to express the temperature in either degrees Fahrenheit or Celsius. Tap the °F or the °C button to choose.

Beneath the text box it says ISA (+0) and ISA @0ft 15.0 °C as a reminder of the **International Standard Atmosphere** in relation to the outside air temperature. These measurements of ISA will change according to the data you input to the above sections.



## Runway Wind Calculator

Tap the **Runway Wind Calculator** and the calculator will appear full screen.

Change the **Runway Number**, **Wind From**, **Wind Speed**, and **Gusting To** by tapping and sliding on the blue circles.

Select **Preferences** to edit the Tailwind Caution, Tailwind Limit, Crosswind Caution, and Target Speed.

## Runway Wind Calculator w/Airport

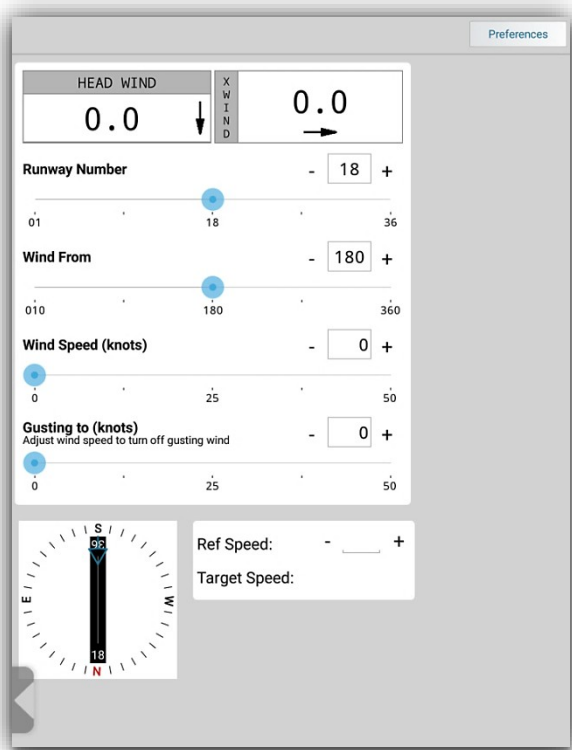
Tap the **Runway Wind Calculator w/ Airport** to search and airport ID and view the runways.

In addition to the **Runway Wind Calculator** components listed above, you can choose your runway number from the actual runways listed at the airport you entered.

At the top of the **Runway Wind Calculator**, there is a **Head Wind/Tail Wind calculator** and an **X Wind calculator** that will calculate your head wind and x wind components based on the other components of the calculator.

At the bottom of the **Runway Wind Calculator** there is a picture of the runway indicating north, south, east, or west with a blue arrow pointing to the calculated path of where your runway wind is coming from.

This picture will also indicate the position of the runway numbers of the actual airport that you entered in relation to the North, South, East, or West headings.





Fuel Type: JET A1 6.7 lb/gal

×	0.0	Pounds (lb)
×	0.0	Gallons (gal)
×	0.0	Kilograms (kg)
×	0.0	Litres (L)

\$ 0.00 per Gallon, gal

\$ 0.00 Total

0.00 Fuel Required

0.00 Fuel on Board

Calculate

0.00 Fuel Needed (lb)

☒ Pounds ☐ Gallons

Conversion Table:

1 lb	=	0.453592 kg
1 kg	=	2.204623 lb
1 gal	=	3.785411 L
1 L	=	0.264172 gal

Equal Time Point Calculator

Distance to Destination

Ground Speed Forward Use Actual GS

☒

Ground Speed Back Use Actual GS

☒

ETP

Calculate

Clear

## Fuel Conversion

The next button on the Tools pop-up window labeled, **Choose a Tool/Calculator** is the **Fuel Conversion** tool.

Tap **Fuel Conversions** to convert fuel to **AVGAS, JET**, or **Custom**.

After you have chosen fuel, you will be redirected to the **Fuel Conversion** page which allows you to enter all of your fuel amounts in different quantities (either pounds, gallons, kilograms, or liters) and calculate the cost of the fuel per pound, gallon, kilogram, or liter.

Beneath the calculator is a **Conversion Table** which gives you an idea of how each quantity relates to each other. For example, 1 lb. is approximately 0.453592 kg, etc.

## Custom Fuel

If you chose the CUSTOM option from the Fuel Type menu, a **Custom Fuel Type** menu window will appear where you can enter either pounds per gallon or kilograms per liter.

## Equal Time Point Calculator

There are several sections that comprise the **Equal Time Point Calculator** page, including the **Distance to Destination, Ground Speed Forward, Ground Speed Back**, and the calculated **ETP**.

You can also choose to turn on the switch beneath the label **Use Actual Ground Speed** to use the speed in which you are actually moving with your device.

After entering your information, tap on the **Calculate** button to have your calculated **ETP** appear beneath the **ETP** label.

To clear all of your entered data, tap the **Clear** button located beneath the **Calculate** button.





## ScratchPad

The **ScratchPad** page is comprised of two buttons labeled, **My Doodles** and **Select Size**.

### My Doodles Button

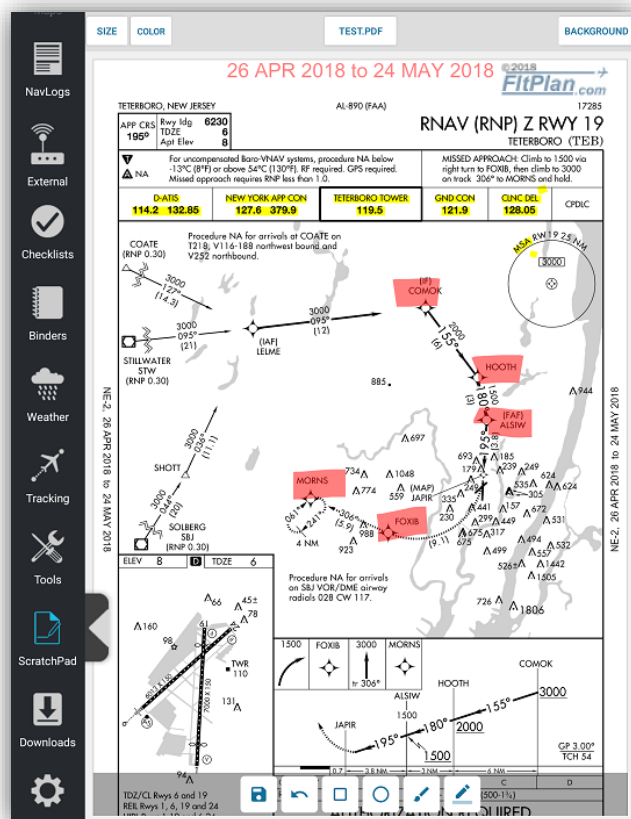
Tap the **My Doodles – New Doodle** to choose a template which can be **Draw**, **Text**, or **Approach Plate**.

**Draw** allows you to draw or write with your finger on the scratchpad for quick note taking.

**Text** allows you to type quick notes.

**Approach Plate** allows you to select a procedure to overlay on the scratchpad that you can draw on. To select a procedure, tap on **Background** and choose the airport and procedure.

Tap on the **Save** icon to save the text or drawing.





## Downloads

Tap **Downloads** to download charts for offline and in-flight use. The Downloads section is split into Maps, Procedures, Documents, A/FD, and Misc. Tap on the category that you wish to download, and tap on the region to download.

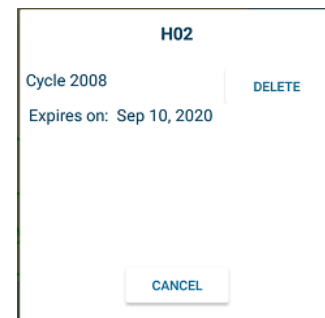
**Maps** include: Jet High, Victor Low, IFR Terminal, Sectionals, TACs, Helicopter, Reference Maps, and Layers.

Tap **Select** next to the category that you wish to display which will bring up the available charts within that region. Either click on an individual chart to download / update, or tap on **Download All** which will download all the available charts within this selection. If the charts are expired, or there is an update available, there will be an Update All button.

The status of charts will display as buttons next to each selection. Red indicates that the charts are expired and need to be updated. Green indicates that the charts are current. Blue indicates that there are future charts available for download. Selecting **Update** next to any chart type will update all the charts that are downloaded within that section. Note: the status does not indicate that all charts for that section are downloaded.

If you tap on a chart that is already downloaded, the currency dates will display or you can choose to delete the chart.

Downloads can still be deleted within Downloads – Delete Downloaded Files (trash bin icon – top right).



- Gray – not downloaded
- Yellow – downloading (in queue)
- Green – downloaded and current
- Green with blue border – current and future charts downloaded
- Blue – new cycle available
- Red – expired



**Procedures** include: procedures for the US, Canada and the Dominican Republic.

**Documents** include: various flight documents that can be downloaded and viewed in the Binders – Documents section. This also includes custom documents uploaded to your FtPlan.com account.

**A/FD** includes: A/FDs for the US and Canada.

**MISC** includes: the Airports Database, FBO Icons, and Airport Diagrams.

### To Download

To download, tap on an icon and it will highlight yellow and display in the Queue. When the file has successfully downloaded, it will display as green. Please make sure that you are connected to Wi-Fi when downloading.

### To Delete



To delete expired charts or delete charts that you no longer need, go to **Delete Files** (trash bin icon – top right). From here you can select Maps, Procedures, A/FD & CFS or Delete All Expired.

Tap on the selection and select the red **X** next to the file name to delete.

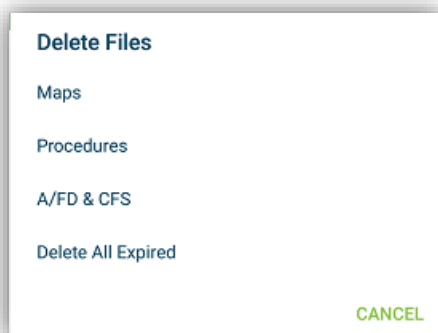
**Delete All Expired** will delete any expired charts off your device. Please note: only delete the expired after you have downloaded the current.

Delete an individual file by tapping and holding on the icon until a message displays saying Delete File, tap Delete. When the file is deleted, it will display as a gray icon.

### Queue

The **Queue** is where all of your downloads in progress will appear once you begin the downloading process.

If you would like to cancel any download while it is in progress, tap the small **X** in the top right corner of the file's window.





## Failed Downloads

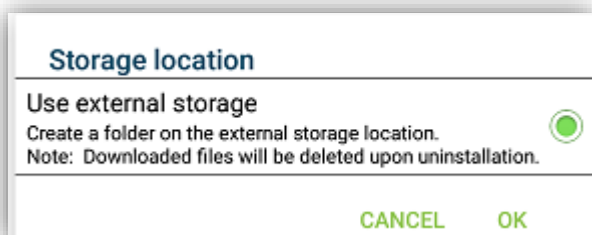
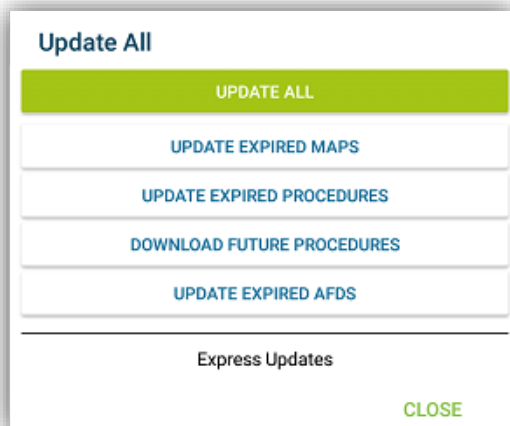
Tap **Failed Downloads** to see a list of all the failed downloads. Tap the file in the list to re-download or select **Retry All** to download all files in the list.

## Update All

Tap **Update All** to update the charts downloaded on your device. Options include Update All, Update Expired Maps, Update Expired Procedures, Download Future Procedures, and Update Expired AFDs. Selecting any of these files will update the expired charts. Please note: you must have the most current Airports Database downloaded. To download this file, go to **Misc – Airports Database**.

Charts are updated every 28 and 56 days in accordance with the Product Schedule. When an update is available there will be a pop-up saying that there is a new Airports Database to download. After the Airports Database is downloaded, select Update All.

Expired charts will display red until they are updated.



## Storage Location

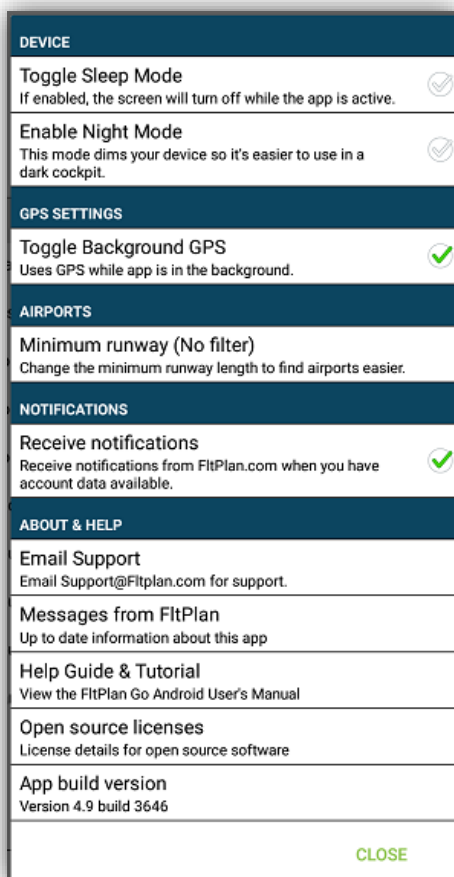


You can move downloads to an external SD card by going to **Storage Location**. Select **Use External Storage** and tap **OK**. All files downloaded after this selection will be moved to the external SD card. Note: FitPlan Go will restart.

Please note: toggling Use External Storage does not move downloads from internal to external storage. You must manually download the files to the correct file location and delete them from the internal storage location.

## Settings

The **Settings** pop-up window has several different sections including, **Device**, **GPS Settings**, **Airports**, **Notifications**, and **About & Help**.





## Device

**Toggle Sleep Mode:** Allow the screen to enter sleep mode when the app is open.

**Enable Night Mode:** dims the screen making it easier to view in different lighting conditions.

## GPS Settings

**Toggle Background GPS:** Uses GPS when the app is minimized.

## Notifications

**Receive Notifications:** A pop-up will notify you from within FItPlan Go that there have been new NavLogs and account data.

## About

Beneath the **About** section, there are several sections including **Email Support**, **Messages from FItPlan**, **Help Guide & Tutorial**, **Open sources licenses**, and **App Build Version**.

Tap the **Email Support** tab and a pop-up window will appear with an email message addressed to [Support@FItPlan.com](mailto:Support@FItPlan.com) where you can quickly email any questions.

Tap the **Messages from FItPlan** tab and you can view any messages that FItPlan has sent out pertaining to app changes, bugs/fixes, or other important information.

Tap the **Help Guide & Tutorial** tab and you can view and download the FItPlan Go for Android manual to your device.

Tap **Open sources licenses** or **App Build Version** tabs to view more information regarding FItPlan Go for Android's licensing and build information.

